


Basic Engineering Study for Aung Sinkha Development Project Phase 1A



PIPELINE BUOYANCY CONTROL AND ANCHORS SPACING CALCULATION REPORT

 PTTEP	PTT Exploration and Production Public Company Limited Aung Sinkha Development Project Phase 1A Basic Engineering
<input checked="" type="checkbox"/> 1. APPROVED <input type="checkbox"/> 2. APPROVED with comments (Proceed to IFB) <input type="checkbox"/> 3. Review with comments <input type="checkbox"/> 4. Rejected to be reissued <input type="checkbox"/> 5. Not APPROVED	
<small>COMPANY'S APPROVAL shall not relieve CONTRACTOR from his obligation under the CONTRACT. COMPANY'S failure not to comment or only partially comment any CONTRACT DOCUMENT shall not be construed as an acceptance of the content of the documents.</small>	
Signed:	

REV	DATE	BY	DESCRIPTION	CHECK	APPR.	CHECK	APPR.
				ENGINEERING APPROVAL		COMPANY APPROVAL	
C1	03-Feb-23	CP	Issued for Bid (VE)	JK	CJ	SD	SA
A1	06-Jan-23	THS	Issued for Review (VE)	JK	CJ	SD	SA

REVISION CODE: A = Issued for Review – B = Issued for Approval – C = Issued for Bid

TOTAL OR PARTIAL AND / OR UTILIZATION OF THIS DOCUMENT ARE FORBIDDEN WITHOUT PRIOR WRITTEN AUTHORIZATION OF THE OWNER

 PTTEP	PTTEP INTERNATIONAL LIMITED		 TEN TECHNIP ENERGIES
	Basic Engineering Study for Aung Sinkha Development Project Phase 1A		
	MM-ASK-1A-APL02-PLR-RPT-0003	<table border="1" style="width: 100%; border-collapse: collapse;"> <tr> <td style="text-align: center;">REV</td> </tr> <tr> <td style="text-align: center;">C1</td> </tr> </table>	
REV			
C1			

DOCUMENT TITLE	PIPELINE BUOYANCY CONTROL AND ANCHORS SPACING CALCULATION REPORT Rev.A1	PTTEPI DOC. NO.	MM-ASK-1A-APL02-PLR-RPT-0003 Rev.A1
----------------	--	-----------------	-------------------------------------

Aung Sinkha Development Project PROJECT: Review Comment		PTTEPI RETURN STATUS		Aung Sinkha Development Project PROJECT			
PTTEPI		T.EN		 			
Date issued:	23-Jan-2023	Date Received:	23-Jan-2023			Reviewed with Comment	
Issued by:	surasitd	Action on:	Chaimongkol				
Approval by:	sarana	Approval by:	Jakkrit				

DO NOT DELETE OTHER REVIEWERS COMMENTS WITHOUT DISCUSSING WITH THEM!

COMMENT NO.	SECT.	PAGE & REF.	CLIENT COMMENTS (REVIEWER)	T.EN RESPONSE	COMMENT STATUS OPEN/CLOSED
1		1	Please check and confirming buoyancy of 8" Pipeline prior to cal the Anti-Buoyancy equipment.	Noted and incorporated	
2		1	Revise as per the conclusion for the buoyancy control calculation concept in the meeting on Jan 20th, 2023.	Noted and incorporated	

Comment by:
zWinaiE
Surasit Daenrak

HOLD LIST

Hold No.	Description	Status
-	-	-

CONTENTS

1. INTRODUCTION.....	5
1.1 Project Overview.....	5
1.2 Purpose of Document.....	6
1.3 Definitions.....	6
1.4 Abbreviation.....	7
2. SUMMARY AND CONCLUSIONS.....	7
2.1 Summary.....	7
2.2 Conclusions.....	8
3. DESIGN DATA AND ASSUMPTIONS.....	9
3.1 Pipeline Design Data.....	9
3.2 Pipeline Operating Data.....	9
3.3 Material Data.....	10
3.4 Air Properties.....	10
3.5 Assumptions.....	11
4. METHODOLOGY.....	12
4.1 Vertical Soil Trench Pressure Acting on Top of Pipeline.....	12
4.2 Safety Factor.....	13
4.3 Stresses in Pipeline Between Screw Anchors.....	13
4.4 Screw Anchor Spacing Criterion.....	16
4.5 Continuous Concrete Weight Coating Criterion.....	17
4.6 Continuous Sand Bag Weight Criterion.....	17
4.7 Load Cases for Pipeline Stress Analysis in Screw Anchor Cases.....	17
5. RESULTS.....	19
5.1 Non-liquified Top Soil Check.....	19
5.2 Buoyancy Control Calculation.....	20
6. REFERENCES.....	24

APPENDICES

APPENDIX A: BATTERY LIMITS FOR PIPELINES.....	25
APPENDIX B: BUOYANCY CONTROL CALCULATION FOR INSTALLATION (SCREW ANCHOR)...	27
APPENDIX C BUOYANCY CONTROL CALCULATION FOR OPERATION CASE (SCREW ANCHOR)	28
APPENDIX D: BUOYANCY CONTROL CALCULATION (CONTINUOUS CONCRETE WEIGHT COATING).....	29
APPENDIX E: BUOYANCY CONTROL CALCULATION (CONTINUOUS SAND BAG WEIGHT)	30

LIST OF FIGURES

Figure 1-1: Block M3 – Aung Sinkha Field, Offshore Myanmar	5
Figure 1-2: Field Block Flow Diagram.....	6
Figure 4-1: Resultant Buoyancy Load on Pipe.....	12
Figure 4-2: Saddle Load.....	15
Figure A-1: Pipeline System Design Battery Limits	26

LIST OF TABLES

Table 3-1 : Pipeline Design Data [1].....	9
Table 3-2 : Pipeline Operating Data [1].....	9
Table 3-3 : Pipeline and Coating Material Data [3]	10
Table 3-4 : Air Properties	11
Table 4-1 : Load Cases.....	18
Table 5-1: Summary of Non-liquefaction Locations [8] [9]	19
Table 5-2 : Summary of Underground Water Table [8] [9].....	19
Table 5-3 : Stress Results and Deflection during Installation.....	20
Table 5-4 : Stress Results and Deflection during Operation.....	21
Table 5-5 : Continuous Concrete Weight Coating Buoyancy Calculation Results.....	22
Table 5-6 : Continuous Sand Bag Weight Buoyancy Calculation Results for Installation Case...	22
Table 5-7 : Continuous Sand Bag Weight Buoyancy Calculation Results for Operation Case	23

1. INTRODUCTION

1.1 Project Overview

PTTEP International Limited (PTTEPI) intends to develop and produce hydrocarbon from the offshore Block M3 named Aung Sinkha (ASK) field. The project is under Production Sharing Contract (PSC) with Myanmar Oil & Gas Enterprise (MOGE) signed on 7th August 2004 while the PSC effective date was on 1st November 2004.

PTTEPI as an Operator had performed 2,842 line-km of 2D seismic, 619 km² of 3D seismic, and drilled 11 Exploration and Appraisal wells. After successful exploration and appraisal drilling campaigns in 2015, PTTEPI completed the ASK Field Development Plan and submitted it to MOGE for approval. MOGE approved ASK Field Development Plan in April 2021.

The ASK field is located offshore in the Gulf of Moattama, Myanmar, as illustrated in Figure 1-1. The field is located approximately 70 km from Land Fall Point (LFP) at Daw Nyein village and 200 km south-west of Yangon with a water depth range of 15-25 meters.

The feed gas will be transported from two (2) offshore wellhead platforms through an offshore export pipeline to ASK Onshore Processing Facilities (APF) located in Daw Nyein village for processing. The sales gas after processing will be exported to the tie-in point at Gas Receiving Station no. 2 (GRS#2), of Domestic Gas to Power Pipeline Development Project, nearby the APF. The condensate will be kept in onshore storage tanks before loading, transporting/ offloading to customers. The design of the surface facilities will be based on a Contractual Daily Capacity (CDC) of 60 MMscfd with provision for future expansion to 100 MMscfd. The gas production is planned to start up by Q4 of 2025.

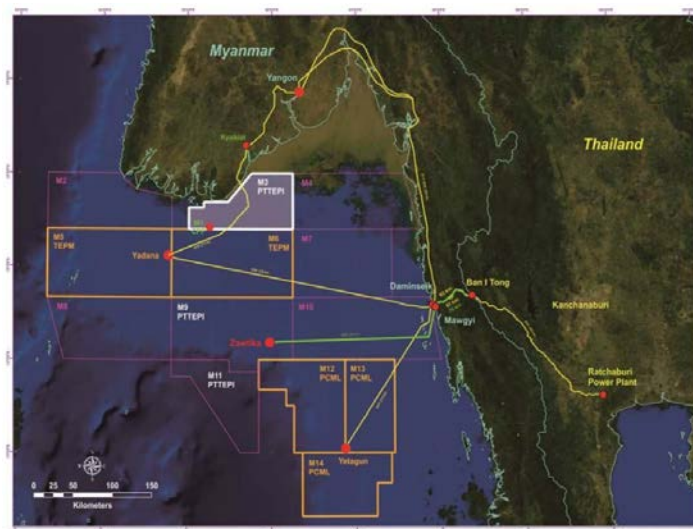


Figure 1-1: Block M3 – Aung Sinkha Field, Offshore Myanmar

The development of Phase 1A consists of the following facilities, as illustrated in Figure 1-2.

- 2 Wellhead Platforms (WPA-1 and WPA-2)
- 1 Intra-field pipeline which links between WPA-1 and WPA-2
- 1 Multiphase export pipeline to transport combined fluid of WPA-1 and WPA-2 to ASK Onshore Processing Facilities (APF)
- ASK Onshore Processing Facilities (APF)
- Onshore pipelines from APF to Gas Receiving Station#2 (GRS#2)
- Onshore infrastructure i.e. condensate offtake facilities, accommodation, Personal Material Transfer Facilities, telecommunication system, roads, etc.
- APL01 Onshore pipeline from landfall to APF
- APL02 Onshore pipeline from APF to ACP

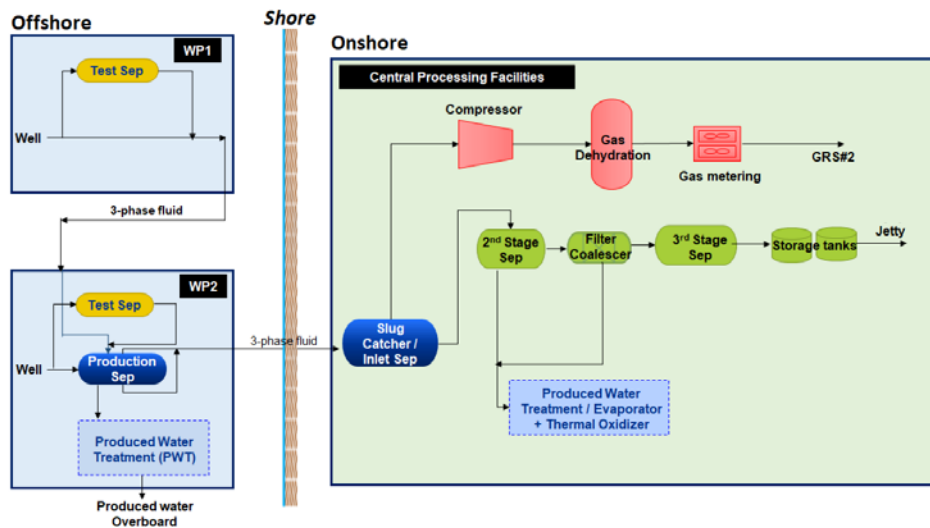


Figure 1-2: Field Block Flow Diagram

1.2 Purpose of Document

The purpose of this document is to perform the vertical stability analysis and buoyancy control design for underground restrained and unrestrained sections of the 8.625” Condensate Pipeline (APL02) from APF to ACP in The Provision of Basic Engineering for Pipelines and Onshore Facilities for Aung Sinkha Development Project Phase 1A.

1.3 Definitions

The following definitions shall apply to this document:

COMPANY	PTTEP International Limited
PROJECT	Basic Engineering Study for Aung Sinkha Development Project Phase 1A

1.4 Abbreviation

3LPE	Three Layer Polyethylene
ACP	ASK Condensate Offloading and Personnel Transfer Facilities
APF	ASK Onshore Processing Facilities
API	American Petroleum Institute
ASK	Aung Sinkha Development Project
ASCE	American Society of Civil Engineers
ASME	American Society of Mechanical Engineers
DP	Design Pressure
FEED	Front End Engineering Design
GRS	Gas Receiving Station
HDD	Horizontal Directional Drilling
LFP	Land Fall Point
LSAW	Longitudinally Submerged Arc Weld
OD	Outside Diameter
SMTS	Specified Minimum Tensile Strength
SMYS	Specified Minimum Yield Strength
WL	Water Level
WPA	Wellhead Platform
WT	Wall Thickness

2. SUMMARY AND CONCLUSIONS

2.1 Summary

This report presents the methodology and results of buoyancy control design. The calculation methodology for buoyancy control is based on “Guideline for the Design of Buried Steel Pipe” [5], as described in Section 4 of this report. Design data and assumptions are mainly based on the Basis of Design [1], and are presented in Section 3. The results in section 5 are summarized in this section.

Screw Anchoring

For pipeline vertical stabilization, screw anchors with maximum spacings as shown below can be selected for pipeline sections installed by the open cut method.

The pipeline in a restrained area requires a screw anchor with a hold on capacity of 8 kN and a maximum screw anchor spacing of 42 m, while the pipeline in an unrestrained area requires a screw anchor with a hold on capacity of 6 kN and a maximum screw anchor spacing of 35 m.

Continuous Concrete Weight Coating

The minimum required thickness concrete coating of 40 mm with concrete density of 3,040 kg/m³ as per [10] is checked for vertical stabilization. Safety factor ratios of total downward force to total upward force are greater than 1.2 in both installation case and operation case.

Sand Bag Weight

For pipeline vertical stabilization by sand bag weight method, the minimum sand bag unit mass per length is 23 kg/m to satisfy requirement (Safety Factor > 1.2) in both installation case and operation case.

2.2 Conclusions

The recommended buoyancy control method is the sand bag weight as below reasons.

- Normally, the continuous concrete weight coating is intentionally used for the mechanical protection. Moreover, the transportation weight is higher than the other methods. However, this method can be used for some specific area, such as wide waterway, watercourse, or pond crossing.
- The screw anchor is usually applied for large size pipe. Therefore, APL02, the small size pipe, is not suitable to use screw anchor method because of the large number of screw anchor applied to prevent large deflection and overstress in the pipe. As a result, the cost of this method will be ineffective.

3. DESIGN DATA AND ASSUMPTIONS

3.1 Pipeline Design Data

Pipeline design data are presented in Table 3-1[1].

Table 3-1 : Pipeline Design Data [1]

Description	Unit	APL02
Service	-	Onshore Condensate Pipeline
Originating from	-	APF
Terminating at	-	ACP
Pipeline Size	mm (Inch)	219.1 (8.625)
Approximate Length	km	18
Pipeline Status	-	Buried
Design Life	Years	20
Corrosion Allowance	mm	3
Selected Pipeline Wall Thickness	mm	7.04
Anti-corrosion Coating	-	3LPE
Open-cut Anti-corrosion Thickness	mm	3.5
Boring/HDD Anti-corrosion Thickness	mm	4.5

3.2 Pipeline Operating Data

Pipeline operating data are presented in Table 3-2 [1].

Table 3-2 : Pipeline Operating Data [1]

Description	Unit	APL02
Fluid	-	Condensate
Operating Pressure [2]	barg	10.4
Design Pressure (DP)	barg	48.7
Hydrotest Pressure	barg	60.9

Description	Unit	APL02
Operating Temperature (Min./ Max.) [2]	°C	20.3/44.1
Design Temperature (Min./Max.)	°C	0/70
Max. Content Density	kg/m ³	723.3
Min. Content Density	kg/m ³	689.8

3.3 Material Data

Pipeline and coating material properties are presented in Table 3-3 [3].

Table 3-3 : Pipeline and Coating Material Data [3]

Description	Unit	APL02
Pipeline OD	mm (Inch)	219.1 (8.625)
Line Pipe Material	-	API 5L X65
Manufacturing Process	-	SMLS or HFW
Specified Minimum Yield Strength (SMYS)	MPa	450
Specified Minimum Tensile Strength (SMTS)	MPa	535
Poisson's Ratio	-	0.3
Steel Density	kg/m ³	7,850
Elastic Modulus	MPa	2.07 x 10 ⁵
Coefficient of Linear Expansion	1/°C	1.17 x 10 ⁻⁵
3LPE Density	kg/m ³	950
Field Joint Density	kg/m ³	127-222 1,025 (saturated)
Concrete Weight Coating Density	kg/m ³	3,040

3.4 Air Properties

Air properties are as given in Table 3-4.

Table 3-4 : Air Properties

Parameter	Unit	Value
Temperature		
High	°C	38.3
Low	°C	23.3

3.5 Assumptions

In the buoyancy control design performed in this report, the following assumptions were made:

- Minimum air temperature will be used as installation temperature for pipe stress analysis in screw anchoring cases.
- For locations, where buoyancy control is required according to [1], buoyancy control design will be performed assuming water table level at the ground surface.
- Effective weight of soil above the pipe is not considered for conservatism.
- Fluid content inside the pipe is neglected for installation case, while minimum content density is considered for operation case.
- Corrosion allowance is not considered and is equal to 3 mm for installation case and operation case, respectively.
- The weight of water displaced by pipe is considered as buoyancy force. If the screw anchor is required, the following assumptions are applied.
- For area where number of screw anchors are more than 3, restrained section and fixed-fixed boundary condition are considered.
- For area where number of screw anchors are equal or less than 3, unrestrained section and pinned-fixed boundary condition are considered.

4. METHODOLOGY

4.1 Vertical Soil Trench Pressure Acting on Top of Pipeline

Where the pipe is located below the water table and soil is not liquefied, the effect of soil grain buoyancy can be included in the earth load pressure. The following equation is used to determine vertical soil pressure acting on top of pipeline [5].

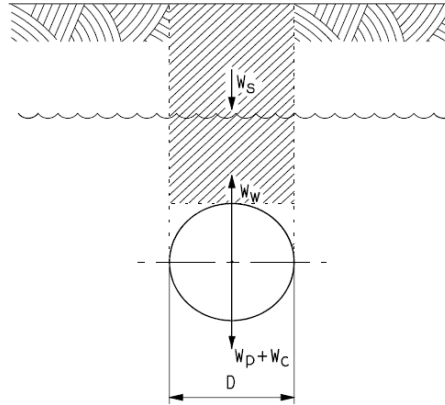


Figure 4-1: Resultant Buoyancy Load on Pipe

$$P_v = \gamma_w h_w + R_w \gamma_d C \quad (4.1)$$

Where,

P_v = Vertical soil trench pressure acting on the top of pipe

C = Height of soil above pipe

R_w = Water buoyancy factor,

$$= 1 - 0.33(h_w/C)$$

h_w = Distance between the top of the pipe and the ground water table (zero if the water table is below the top of the pipe and equal to C if the water level is above ground level)

γ_w = Unit weight of water

γ_d = Dry unit weight of soil

4.2 Safety Factor

Safety factor is the ratio of total downward force to upward force; safety factor can be defined in the following equation;

$$SF = \frac{W_P + W_C + W_S + \left(\frac{F_R}{L}\right) + W_{SB}}{W_W} \quad (4.2)$$

Where,

SF = Safety factor

F_R = Screw anchor resistance

L = Spacing between anchors

W_P = Weight of pipe per unit length of pipe

W_C = Weight of pipe contents per unit length of pipe

W_S = Scaled explosive weight per unit length of pipe, $(P_v - \gamma_w \cdot h_w) \cdot D$

W_W = Weight of displaced fluid per unit length of pipe

W_{SB} = Sand bag unit weight per length

D = Pipe outer diameter

Safety factor of 1.2 (minimum of 20% negative buoyancy) shall be used [1].

4.3 Stresses in Pipeline Between Screw Anchors

4.3.1 Hoop Stress Criterion

For both restrained and unrestrained pipelines, the circumferential (hoop) stress due to internal pressure is calculated as per Section 402.3, ASME B31.4 [6] requirement.

$$S_H = \frac{P_i D}{2t} \quad (4.3)$$

Where,

D = outside diameter of pipe, in. (mm)

P_i = internal design gage pressure, psi (bar)

S_H = circumferential (hoop) stress due to internal pressure, psi (MPa)

t = wall thickness of pipe, in. (mm)

The above equation may not be applicable for pipe D/t less than 20.

4.3.2 Longitudinal Stress Criterion

According to Section 402.6 of ASME B31.4 [6], longitudinal stress in restrained pipe is calculated as

$$S_L = S_E + vS_H + \frac{M}{Z} + F_a/A \quad (4.4)$$

And longitudinal stress for unrestrained pipeline is defined in the following equation

$$S_L = \frac{P_i D}{40t} + \frac{iM}{Z} + \frac{F_a}{A} \quad (4.5)$$

Where,

- A = metal area of nominal pipe cross section, in.² (mm²)
- F_a = axial force, such as weight on a riser, lb (N)
- M = bending moment, in.-lb (N·m)
- S_E = thermal expansion stress, psi (MPa)
- S_H = circumferential (hoop) stress due to internal pressure, psi (MPa)
- Z = section modulus of the pipe, in.³ (cm³)
- v = Poisson's ratio
- D = outside diameter of pipe, in. (mm)
- i = component stress intensification in plane of loading, limited by $0.75i \geq 1$.
For straight pipe, $i = 1.0$.
- P_i = internal design gage pressure, psi (bar)
- t = wall thickness of pipe, in. (mm)

4.3.3 Stress due to Saddle Load

There are local stresses in both longitudinal and circumferential directions due to the load from screw anchor saddle onto the pipe, which can be calculated using the following formula [5]:

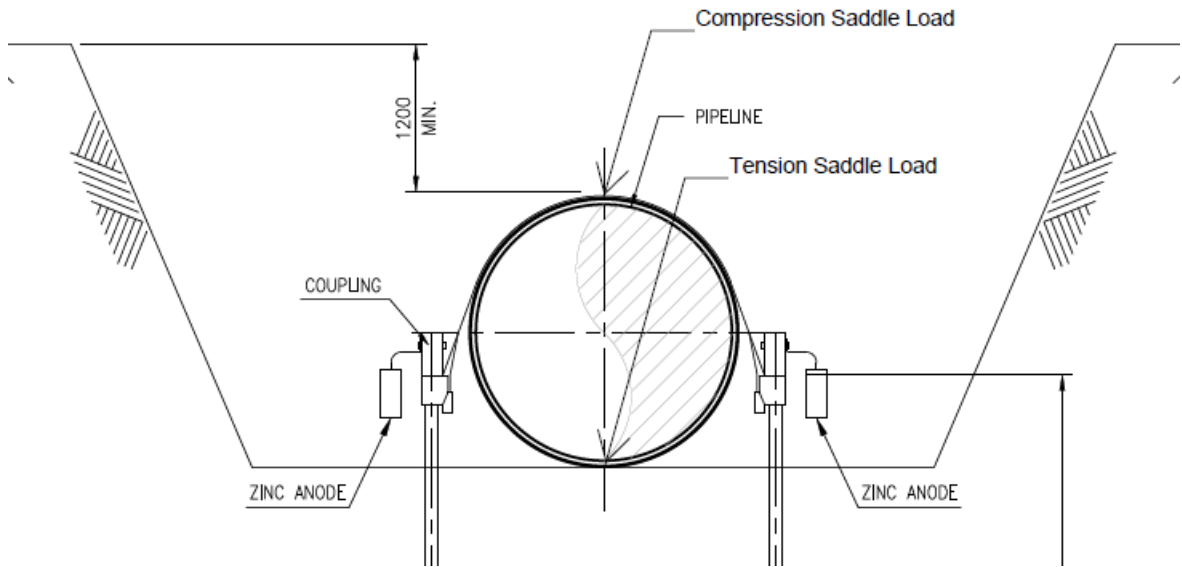


Figure 4-2: Saddle Load

$$S_S = k \cdot \frac{P}{t^2} \cdot \ln\left(\frac{R}{t}\right) \tag{4.6}$$

Where,

- S_S = Maximum local stress due to saddle load
- P = Total saddle reaction force (screw anchor resistance)
- R = Pipe outer radius
- t = Pipeline wall thickness
- k = $0.02 - 0.00012 \cdot (\beta - 90^\circ)$
- β = Total angle in degrees subtended by arc of contact between pipe and saddle, 90 degrees is considered.

4.3.4 Combined Stress Criterion

As per clause 402.7 of ASME B31.4 [6], in restrained pipe, the longitudinal and circumferential stresses are combined in accordance with the maximum shear stress theory as follows:

$$S_{eq} = 2 \sqrt{[(S_L - S_H)/2]^2 + S_t^2} \tag{4.7}$$

Where,

- S_{eq} = equivalent combined stress

S_t = torsional stress, psi (MPa)

When S_t can be disregarded, the combined stress calculation can be reduced to the following:

$$|S_L - S_H| \quad (4.8)$$

Stress values for steel pipe during operation shall not exceed the allowable values. The allowable values for pipeline system stresses of equivalent combined stress for restrained pipeline is defined in the following equation [6].

$$S_{eq} = 0.90S_y \quad (4.9)$$

Where

S_y = specified minimum yield strength of pipe material, psi (MPa)

4.4 Screw Anchor Spacing Criterion

4.4.1 Screw Anchor Capacity

Minimum hold down capacity of screw anchor pair is 40,000 lbf (177.9 kN) [1]. Screw anchor structural design shall be based on a safety factor of 2.0 [1].

For area where number of screw anchors are more than 3, fixed-fixed boundary condition is considered. Minimum required hold down load of screw anchor pair is calculated based on buoyancy force of given span.

$$F_l = F_b \cdot L \quad (4.10)$$

Where,

F_b = Net Upward Buoyancy Force per unit length

For area that number of screw anchors are equal or less than 3, pinned-fixed boundary condition is considered, conservatively.

The maximum force acting on one end of single span is calculated as below.

$$F_1 = \frac{5F_b \cdot L}{8} \quad (4.11)$$

The minimum required hold down load per a pair of screw anchors for two spans is calculated by the following equation;

$$F_1 = 2 \cdot \frac{5F_b \cdot L}{8} \quad (4.12)$$

4.4.2 Maximum Deflection

Maximum deflection of pipe can be determined based on distance between screw anchors [5].

For fixed-fixed boundary condition;

$$\delta_{max} \geq \frac{F_b \cdot L^4}{384 \cdot E \cdot I} \quad (4.13)$$

For pinned-fixed boundary condition;

$$\delta_{max} \geq \frac{F_b \cdot L^4}{185 \cdot E \cdot I} \quad (4.14)$$

Where,

δ_{max} = Maximum allowable deflection of pipe, 0.2 m

L = Spacing between screw anchors

E = Pipe modulus of elasticity

I = Pipe moment of inertia

F_b = Net upward buoyancy force per unit length, $W_w - [W_p + W_c + W_s]$

4.5 Continuous Concrete Weight Coating Criterion

The continuous concrete weight coating is considered to find the required concrete coating thickness to overcome the buoyant force. The safety factor in Section 4.2 shall be checked.

4.6 Continuous Sand Bag Weight Criterion

The continuous sand bag weight is considered to find the required unit weight/mass to overcome the buoyant force. The safety factor in Section 4.2 shall be checked.

4.7 Load Cases for Pipeline Stress Analysis in Screw Anchor Cases

The following load combinations are used in the pipeline stress analysis in screw anchor cases.

Table 4-1 : Load Cases

Pipeline Name	Case	Load Case	Selected WT (mm)	Pressure (barg)	Temperature (°C)	Other Loads
APL02 (8.625" Pipeline)	Installation	-	7.04	1.01	23.3	Bending moment due to buoyant force, and Load from Saddle
	Operation	1	7.04	48.7	70	
	Operation	2	7.04	48.7	0	

5. RESULTS

5.1 Non-liquified Top Soil Check

The soil below top of pipe will be considered as liquified soil but the soil above top of pipe will be considered as non-liquified soil, then this condition is needed to check the effect of the top soil weight.

By checking, top soil dry weight is sufficiently high against the buoyancy force when considering the cover depth of 1.2 m for open cut. Therefore, the buoyancy control method is not required.

The non-liquified soil locations and underground water table locations for indicated liquified soil and saturated soil are extracted from Geotechnical Investigation Report [8] and presented in Table 5-1 and Table 5-2.

Table 5-1: Summary of Non-liquefaction Locations [8] [9]

BH No. Location	FS	Result (FS < 1 Liquefied)
BH30-05-APF	1.85	Non Liquefied

Table 5-2 : Summary of Underground Water Table [8] [9]

BH No. Location	WL (m)	Result (WL ≤ 2m Saturated Soil)
BH3-13	0.8	Saturated Soil
BH3-14	0.5	Saturated Soil
BH3-16	0.8	Saturated Soil
BH3-17	1	Saturated Soil
BH3-18	-	<u>Non-Saturated Soil</u>
BH3-19	0.2	Saturated Soil
BH3-20	1.3	Saturated Soil
BH3-21	1	Saturated Soil
BH3-22	1	Saturated Soil
BH3-23	1	Saturated Soil

BH No. Location	WL (m)	Result (WL ≤ 2m Saturated Soil)
BH3-24	1	Saturated Soil

5.2 Buoyancy Control Calculation

Screw Anchoring

Maximum spacing between screw anchors was determined based on the criteria presented in Section 4.4 of this report. The stress results and deflection during installation and operation are checked as presented in the following tables. Detailed Calculations are presented in Appendices B and C.

Table 5-3 : Stress Results and Deflection during Installation

Results		Restrained	Unrestrained
Maximum Screw Anchor Spacing (m)		80	67
Force	Net Upward Force (kN/m)	0.4	0.4
	Net Downward Force (kN/m)	0.5	0.5
	Safety Factor	1.23	1.21
	Check SF>1.2	Pass	Pass
Deflection	Calculated Deflection (mm)	192.3	196.3
	Allowable Deflection (mm)	200.0	200.0
	Check	Pass	Pass
Maximum Longitudinal Stress	Calculated Stress (MPa)	23.9	32.1
	Allowable Stress (MPa)	405.0	337.5
	Check	Pass	Pass
Maximum Combined Stress	Calculated Stress (MPa)	20.7	27.0

Results		Restrained	Unrestrained
	Allowable Stress(MPa)	405.0	405.0
	Check	Pass	Not Required (Note 1)
Screw Anchor Force	Minimum Hold on Capacity(kN)	8.0	6.0

Note

1. For information

Table 5-4 : Stress Results and Deflection during Operation

Results		Restrained		Unrestrained
		Load Case 1	Load Case 2	
Maximum Screw Anchor Spacing (m)		42	42	35
Force	Net Upward Force (kN)	0.4	0.4	0.4
	Net Downward Force (kN)	0.5	0.5	0.5
	Safety Factor	1.21	1.21	1.21
	Check SF>1.2	Pass	Pass	Pass
Deflection	Calculated Deflection (mm)	188.0	188.0	188.2
	Allowable Deflection(mm)	200.0	200.0	200.0
	Check	Pass	Pass	Pass
Maximum Longitudinal Stress	Calculated Stress (MPa)	150.8	173.1	145.4
	Allowable Stress(MPa)	405.0	405.0	337.5
	Check	Pass	Pass	Pass
Maximum Combined Stress	Calculated Stress (MPa)	282.9	113.3	146.6
	Allowable Stress(MPa)	405.0	405.0	405.0

Results		Restrained		Unrestrained
		Load Case 1	Load Case 2	
	Check	Pass	Pass	Not Required (Note 1)
Screw Anchor Force	Minimum Hold on Capacity(kN)	0.2	0.2	0.2

Note

1. For information

Continuous Concrete Weight Coating

Minimum continuous concrete weight coating thickness was determined based on the criterion presented in Section 4.5 of this report and minimum required thickness of 40 mm as per [10]. The continuous concrete weight coating density of 3,040 kg/m³ is considered. Detailed Calculations are presented in Appendix D. Summary of the results is presented in the following tables.

Table 5-5 : Continuous Concrete Weight Coating Buoyancy Calculation Results

Case	Min. Concrete Coating Thickness (mm)	Net Downward Force (kN/m)	Net Upward Force (kN/m)	Safety Factor	Check (SF≥1.2)
Installation	40	1.4	0.7	1.91	Pass
Operation	40	1.5	0.7	2.03	Pass

Continuous Sand Bag Weight

Minimum continuous sand bag unit weight and mass per length were determined based on the criterion presented in Section 4.6 of this report. Detailed Calculations are presented in Appendix E. The following tables present the results in installation case and operation case.

Table 5-6 : Continuous Sand Bag Weight Buoyancy Calculation Results for Installation Case

Parameter	APL02
Minimum Sand Bag Unit Mass per Length (kg/m)	23
Sand Bag Volume (m ³ /m)	0.014
Buoyancy Force per Length (kg/m)	13.6
Minimum Submerged Sand Bag Unit Mass per Length (kg/m)	9.4

Parameter	APL02
Net Downward Force (kN/m)	0.5
Net Upward Force (kN/m)	0.4
Check (SF \geq 1.2)	Pass

Table 5-7 : Continuous Sand Bag Weight Buoyancy Calculation Results for Operation Case

Parameter	APL02
Minimum Sand Bag Unit Mass per Length (kg/m)	0.71
Sand Bag Volume (m ³ /m)	0.014
Buoyancy Force per Length (kg/m)	0.4
Minimum Submerged Sand Bag Unit Mass per Length (kg/m)	0.29
Net Downward Force (kN/m)	0.5
Net Upward Force (kN/m)	0.4
Check (SF \geq 1.2)	Pass

6. REFERENCES

- [1] Pipeline Basis of Design, Design Criteria, MM-ASK-1A-APL01-PLR-BOD-0001
- [2] Process Heat and Material Balance, MM-ASK-1A-APF-PRP-HMB-0001
- [3] Specification for Line Pipe, API Spec 5L
- [4] McGraw-Hill, Roark's Formula for Stress & Strain, Seventh Edition
- [5] Guidelines for the Design of Buried Steel Pipe, ASCE publication American Lifelines Alliance
- [6] Pipeline Transportation Systems for Liquids and Slurries, ASME B31.4
- [7] Acceptance Criteria for Helical Foundation System and Devices, AC358, ICC Evaluation Service
- [8] Geotechnical Investigation Report for Geotechnical Investigation (GTI) for Onshore Facilities of AUNG SINKHA Development Project by International Integrated Services Company Limited.
- [9] Geotechnical Investigation Report (GTP Project), May to September 2021, International Integrated Services Company Limited
- [10] Concrete Coating of Submarine Pipelines, 10008-STD-6-PLR-014

APPENDIX A: BATTERY LIMITS FOR PIPELINES

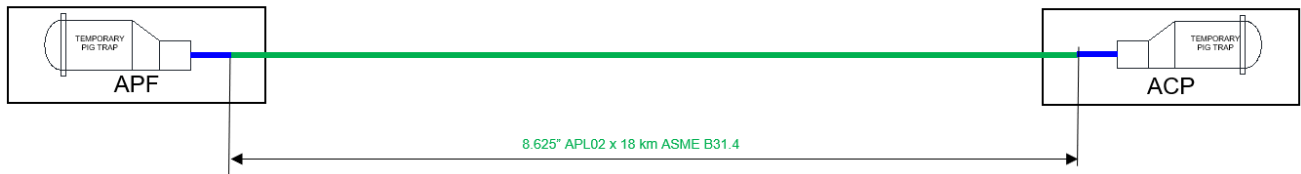


Figure A-1: Pipeline System Design Battery Limits

Note:

1. Scope of this document is APL02.

APPENDIX B: BUOYANCY CONTROL CALCULATION FOR INSTALLATION (SCREW ANCHOR)



Technip Energies
Pipeline Engineering Department

Buoyancy Control Calculation (Screw Anchor)

**PROJECT : Basic Engineering Study for Aung Sinkha Development
Project Phase 1A**

PIPELINE NAME: APL02

Installation: Temperature is 23.3 °C - No. of Screw Anchor > 3

MAIN FEATURES

This spreadsheet performs the pipeline buoyancy control calculation for an onshore burial pipeline system. The following references are used in this calculation sheet.

- /1/ American Society of Mechanical Engineers, Pipeline Transportation Systems for Liquids and Slurries, ASME B31.4-2019.
- /2/ American Lifelines Alliance and American Society of Civil (ASCE), Guidelines for the Design of Buried Steel Pipe, July 2001.

REFERENCE DOCUMENTATION

This spreadsheet was originally developed for application to specific project. It has been further enhanced and consolidated. A dedicated manual has been issued and should be read in conjunction with the use of this MATHCAD sheet.

REVISION HISTORY

Date	Rev.	Status	Comment	Author
20/8/17	0	For Implementation	The spreadsheet was updated by adding unrestrained pipe and installation torque calculation	TKI
18/2/13	1	For Implementation	The spreadsheet was updated and validation by Jakkrit K.	JKK
27/9/12	2	For Implementation	The spreadsheet was developed by Soratus P.	SWN
8/4/2021	3	For Implementation	The spreadsheet was converted to MathCAD Prime by Wut T.	WUT

A. Input Data

Pipeline Parameters

Condition Type	$HT := \text{“Hydrostatic Test”}$ $OB := \text{“Operation Beginning”}$ $OE := \text{“Operation End”}$
Condition Selection	$Condition := OB$
Boundary Type	$RP := \text{“Restrained Pipe”}$ $UP := \text{“Unrestrained Pipe”}$
Boundary Selection	$Boundary := RP$
Pipe Outside Diameter	$OD := 8.625 \text{ in}$
Pipe Wall Thickness	$WT := 7.04 \text{ mm}$
Internal Corrosion Allowance	$CA := 3 \text{ mm}$
Specified Minimum Yield Strength (S)	$S := 450 \text{ MPa}$
Steel Density	$\rho_{st} := 7850 \frac{\text{kg}}{\text{m}^3}$
Young's Modulus	$E := 207 \text{ GPa}$
Fluid Content Density (Operation case)	$\rho_{cont} := 0 \frac{\text{kg}}{\text{m}^3}$
Coefficient of Thermal Expansion	$\alpha := 11.7 \cdot 10^{-6} \cdot \frac{1}{\Delta^\circ\text{C}}$

Design Parameters

Design Pressure	$P_d := 1.01 \text{ bar}$
Hydrotest Pressure	$P_h := 0 \cdot \text{bar}$
Design Temperature	$T_d := 23.3 \text{ }^\circ\text{C}$
Maximum Allowable Deflection in Pipe	$\delta_{max} := 200 \text{ mm}$

Coating Parameters

External Corrosion Coating Density	$\rho_{cor} := 950 \frac{\text{kg}}{\text{m}^3}$
External Corrosion Coating Thickness	$t_{cor} := 3.5 \text{ mm}$
Internal Corrosion Coating Density	$\rho_{in} := 0 \frac{\text{kg}}{\text{m}^3}$
Internal Corrosion Coating Thickness	$t_{inc} := 0 \text{ mm}$

Concrete Coating Density

$$\rho_{con} := 0 \frac{kg}{m^3}$$

Concrete Coating Thickness

$$t_{con} := 0 \text{ mm}$$

Environment Parameters

Water Density

$$\rho_w := 1000 \frac{kg}{m^3}$$

Mud Density

$$\rho_m := 1400 \frac{kg}{m^3}$$

$W := \text{"Water"}$

$M := \text{"Mud"}$

Determined Buoyancy Force from

$$\rho := W$$

Minimum Average Air Temperature

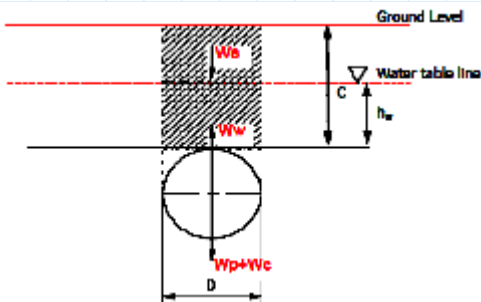
$$T_a := 23.3 \text{ } ^\circ\text{C}$$

Mean Ground Temperature

$$T_g := 26 \text{ } ^\circ\text{C}$$

Longitudinal Stress due to Other Axial Loading

$$S_x := 0 \text{ Pa}$$



Height of Backfill above The Top of Pipeline

$$C := 1.2 \text{ m}$$

Height of Water above The Top of Pipeline

$$h_w := C$$

Consider Effective Soil Weight (SW)

$$SW := \text{"No"}$$

(Yes or No)

Soil Parameters

Unit Weight of Wet Soil

$$\gamma_{wet} := 0 \frac{kN}{m^3}$$

Moisture Content of Wet Soil

$$w := 0\%$$

Screw Anchor Parameters

Minimum Hold on Capacity (ultimate)

$$Q_a := 8 \text{ kN}$$

Span Length of Screw Anchor

$$L_s := 80 \text{ m}$$

Minimum Angle Subtended by arc of Contact
between Pipe and Saddle (Degree)

$$\beta := 90$$

Empirical Installation torque coefficient

$$K_T := 10 \cdot ft^{-1}$$

Factor of Safety

Requirement for Negative Buoyancy Force

$$W_R := 0 \frac{kg}{m}$$

(0 if assigned the SF_b)

Safety Factor for Buoyancy Force

$$SF_b := 1.2$$

(0 if assigned the W_R)

B. Calculation

B-1 Parameter Calculation

Internal Pressure

$$P_i := \begin{cases} \text{if } Condition = \text{“Hydrostatic Test”} \\ \quad \parallel P_h \\ \text{else} \\ \quad \parallel P_d \end{cases}$$

Temperature Changed

$$\Delta T := \begin{cases} \text{if } Condition = \text{“Hydrostatic Test”} \\ \quad \parallel T_g - T_a \\ \text{else} \\ \quad \parallel T_d - T_a \end{cases}$$

Fluid Displacement Density

$$\rho_b := \begin{cases} \text{if } \rho = \text{“Water”} \\ \quad \parallel \rho_w \\ \text{else} \\ \quad \parallel \rho_m \end{cases}$$

Corroded Pipe Wall Thickness

$$WT := \begin{cases} \text{if } Condition = \text{“Operation End”} \\ \quad \parallel WT - CA \\ \text{else} \\ \quad \parallel WT \end{cases}$$

Internal Corrosion Coating Thickness

$$t_{in} := \begin{cases} \text{if } Condition = \text{“Operation End”} \\ \quad \parallel 0 \text{ mm} \\ \text{else} \\ \quad \parallel t_{inc} \end{cases}$$

Internal Corrosion Coating Inner Diameter

$$ID_{in} := OD - 2 WT - 2 t_{in}$$

Pipeline Internal Diameter

$$ID := OD - 2 WT$$

Outside Coating Diameter

$$D_{cor} := OD + 2 t_{cor}$$

Total Outside Pipe Diameter

$$D := D_{cor} + 2 t_{con}$$

Pipeline Moment of Inertia

$$I := \frac{\pi}{64} (OD^4 - ID^4)$$

Pipeline Sectional Elastic Modulus

$$Z := \frac{2 I}{OD}$$

Content Weight	$W_c := \begin{cases} \text{if } Condition = \text{“Hydrostatic Test”} \\ \frac{\rho_w \cdot \pi \cdot ID_{in}^2 \cdot g}{4} \\ \text{else} \\ \frac{\rho_{cont} \cdot \pi \cdot ID_{in}^2 \cdot g}{4} \end{cases}$
Internal Liner Weight	$W_{in} := \rho_{in} \cdot g \cdot \frac{\pi}{4} \cdot (ID^2 - ID_{in}^2)$
Pipeline Weight (Steel Weight)	$W_{st} := \rho_{st} \cdot g \cdot \frac{\pi}{4} \cdot (OD^2 - ID^2)$
External Corrosion Coating Weight	$W_{cor} := \rho_{cor} \cdot g \cdot \frac{\pi}{4} \cdot (D_{cor}^2 - OD^2)$
Concrete Coating Weight	$W_{con} := \rho_{con} \cdot g \cdot \frac{\pi}{4} \cdot (D^2 - D_{cor}^2)$
Weight of Pipe per Unit Length	$W_p := W_c + W_{in} + W_{st} + W_{cor} + W_{con}$
Unit Weight of Water	$\gamma_w := \rho_w \cdot g$
Unit Weight of Displacement Fluid	$\gamma_b := \rho_b \cdot g$
Unit Weight of dry soil	$\gamma_d := \frac{\gamma_{wet}}{1 + w}$
Effective Unit Weight	$\gamma_{eff} := \gamma_{wet} - \gamma_w$
Weight of fluid displaced by pipe per unit length	$W_b := \gamma_b \cdot \frac{\pi}{4} \cdot D^2$
Water Buoyancy Factor	$R_w := 1 - 0.33 \left(\frac{h_w}{C} \right)$
Earth Pressure Acting to Top of Pipeline	$P_v := \gamma_w \cdot h_w + R_w \cdot \gamma_d \cdot C$
Effective Weight of Soil above Pipe	$W_s := \begin{cases} \text{if } SW = \text{“Yes”} \\ (P_v - \gamma_w \cdot h_w) \cdot D \\ \text{else} \\ 0 \frac{N}{m} \end{cases}$
Net Upward Force due to Buoyancy per unit length	$F_b := (W_b + W_R \cdot g) - (W_p + W_s)$
Bending Moment	$M := \begin{cases} \text{if } Boundary = \text{“Restrained Pipe”} \\ \frac{1}{12} \cdot F_b \cdot L_s^2 \\ \text{else} \\ \frac{1}{8} \cdot F_b \cdot L_s^2 \end{cases}$

B-2 Buoyancy Safety Factor

$$\text{Safety Factor} \quad SF := \frac{W_p + W_s + \frac{Q_a}{L_s}}{W_b}$$

Safety Factor Checking

$$\text{Check}_{SF} := \begin{cases} \text{if } SF > SF_b \\ \quad \text{"Pass"} \\ \text{else} \\ \quad \text{"Fail"} \end{cases}$$

B-3 Stress Calculation

Stress due to Saddle Load

$$S_s := (0.02 - 0.00012 \cdot (\beta - 90)) \cdot \frac{Q_a}{WT^2} \cdot \ln\left(\frac{OD}{2 WT}\right)$$

Hoop Stress

1: Bottom of Pipe
2: Top of Pipe

$$S_{H1} := \begin{cases} \text{if } \frac{OD}{WT} \geq 20 \\ \quad \frac{P_i \cdot OD}{2 WT} \\ \text{else} \\ \quad \frac{P_i \cdot (OD - WT)}{2 WT} \end{cases} \quad S_{H2} := \begin{cases} \text{if } \frac{OD}{WT} \geq 20 \\ \quad \frac{P_i \cdot OD}{2 WT} - S_s \\ \text{else} \\ \quad \frac{P_i \cdot (OD - WT)}{2 WT} - S_s \end{cases}$$

Longitudinal Stress

Longitudinal Stress due to Internal Pressure

$$S_{p1} := \begin{cases} \text{if } Boundary = \text{"Restrained Pipe"} \\ \quad 0.3 \cdot S_{H1} \\ \text{else} \\ \quad 0.5 \cdot S_{H1} \end{cases} \quad S_{p2} := \begin{cases} \text{if } Boundary = \text{"Restrained Pipe"} \\ \quad 0.3 \cdot S_{H2} \\ \text{else} \\ \quad 0.5 \cdot S_{H2} \end{cases}$$

Longitudinal Stress due to Thermal Expansion

$$S_T := \begin{cases} \text{if } Boundary = \text{"Restrained Pipe"} \\ \quad -E \cdot \alpha \cdot \Delta T \\ \text{else} \\ \quad 0 \text{ MPa} \end{cases}$$

Longitudinal Stress due to Bending Moment

$$S_B := \frac{M}{Z}$$

Net Longitudinal Stress in Pipeline

$$S_{L1} := S_T + S_{p1} + S_x + (S_B)$$

$$S_{L2} := S_T + S_{p2} + S_x - S_B$$

Maximum Longitudinal Stress

$$S_{Lmax} := \max(|S_{L1}|, |S_{L2}|)$$

Allowable Longitudinal Stress

$$S_{Lallow} := \begin{cases} \text{if } Boundary = \text{"Restrained Pipe"} \\ \quad 0.9 \cdot S \\ \text{else} \\ \quad 0.75 \cdot S \end{cases}$$

Longitudinal Stress Checking

$$Check_L := \begin{cases} \text{if } S_{Lmax} \leq S_{Lallow} \\ \quad \text{"Pass"} \\ \text{else} \\ \quad \text{"Fail"} \end{cases}$$

Combined Stress

Combined Stress for Restrained Pipeline $S_{com1} := |S_{L1} - S_{H1}|$

$$S_{com2} := |S_{L2} - S_{H2}|$$

Maximum Combined Stress

$$S_{com_max} := \max(|S_{com1}|, |S_{com2}|)$$

Allowable Combined Stress

$$S_{com_allow} := 0.9 \cdot S$$

Combined Stress Checking

$$Check_{com} := \begin{cases} \text{if } Boundary = \text{"Unrestrained Pipe"} \\ \quad \text{"Not Required"} \\ \text{else if } Boundary = \text{"Restrained Pipe"} \wedge S_{com_max} \leq S_{com_allow} \\ \quad \text{"Pass"} \\ \text{else} \\ \quad \text{"Fail"} \end{cases}$$

Deflection

Maximum Deflection in Pipeline

$$\delta_{ac} := \begin{cases} \text{if } Boundary = \text{"Restrained Pipe"} \\ \quad \frac{F_b \cdot L_s^4}{384 \cdot E \cdot I} \\ \text{else} \\ \quad \frac{F_b \cdot L_s^4}{185 \cdot E \cdot I} \end{cases}$$

Deflection Checking

$$Check_{de} := \begin{cases} \text{if } \delta_{ac} \leq \delta_{max} \\ \quad \text{"Pass"} \\ \text{else} \\ \quad \text{"Fail"} \end{cases}$$

Force

Anchor Force

$$F_1 := \begin{cases} \text{if } Boundary = \text{"Restrained Pipe"} \\ \quad F_b \cdot L_s \\ \text{else} \\ \quad 2 \cdot \frac{5 \cdot F_b \cdot L_s}{8} \end{cases}$$

Anchor Force Checking

$$Check_{af} := \begin{cases} \text{if } F_1 \leq Q_a \\ \quad \text{"Pass"} \\ \text{else} \\ \quad \text{"Fail"} \end{cases}$$

Installation Torque

$$T_{min} := \frac{Q_a}{2 \cdot K_T}$$

C. Summary of Results

C-1 Safety Factor for Buoyancy Control Checking

Safety Factor for Buoyancy Control

$$SF = 1.229$$

Safety Factor for Buoyancy Control Checking

$$Check_{SFB} = \text{"Pass"}$$

(SF > 1.2)

C-2 Net Longitudinal Stress Checking

Actual Longitudinal Stress

$$S_{L1} = 22.268 \text{ MPa}$$

$$S_{L2} = -23.983 \text{ MPa}$$

Maximum Longitudinal Stress

$$S_{Lmax} = 23.983 \text{ MPa}$$

Allowable Longitudinal Stress

$$S_{Lallow} = 405 \text{ MPa}$$

Longitudinal Stress Checking

$$Check_L = \text{"Pass"}$$

C-3 Combined Stress Checking

Actual Combined Stress

$$S_{com1} = 20.696 \text{ MPa}$$

$$S_{com2} = 16.694 \text{ MPa}$$

Maximum Combined Stress

$$S_{com,max} = 20.696 \text{ MPa}$$

Allowable Combined Stress

$$S_{com,allow} = 405 \text{ MPa}$$

Longitudinal Combined Checking

$$Check_{com} = \text{"Pass"}$$

C-4 Deflection Checking

Maximum Deflection

$$\delta_{ac} = 192.257 \text{ mm}$$

Allowable Deflection

$$\delta_{max} = 200 \text{ mm}$$

Deflection Checking

$$Check_{de} = \text{"Pass"}$$

C-5 Anchor Force Checking

Upward Force due to Buoyancy per unit length

$$F_b = 0.01 \frac{\text{kN}}{\text{m}}$$

Maximum Anchor Force

$$F_1 = 0.787 \text{ kN}$$

Allowable Anchor Force

$$Q_a = 8 \text{ kN}$$

Net Downward Force

$$W_p + W_s + \frac{Q_a}{L_s} = 0.484 \frac{\text{kN}}{\text{m}}$$

Net Upward Force

$$W_b = 0.394 \frac{kN}{m}$$

Screw Installation Torque

$$T_{min} = 0.122 \text{ kN} \cdot \text{m}$$

Anchor Force Checking

$$Check_{af} = \text{"Pass"}$$



Technip Energies
Pipeline Engineering Department

Buoyancy Control Calculation (Screw Anchor)

**PROJECT : Basic Engineering Study for Aung Sinkha Development
Project Phase 1A**

PIPELINE NAME: APL02

Installation: No. of Screw Anchor \leq 3

MAIN FEATURES

This spreadsheet performs the pipeline buoyancy control calculation for an onshore burial pipeline system. The following references are used in this calculation sheet.

- /1/ American Society of Mechanical Engineers, Pipeline Transportation Systems for Liquids and Slurries, ASME B31.4-2019.
- /2/ American Lifelines Alliance and American Society of Civil (ASCE), Guidelines for the Design of Buried Steel Pipe, July 2001.

REFERENCE DOCUMENTATION

This spreadsheet was originally developed for application to specific project. It has been further enhanced and consolidated. A dedicated manual has been issued and should be read in conjunction with the use of this MATHCAD sheet.

REVISION HISTORY

Date	Rev.	Status	Comment	Author
20/8/17	0	For Implementation	The spreadsheet was updated by adding unrestrained pipe and installation torque calculation	TKI
18/2/13	1	For Implementation	The spreadsheet was updated and validation by Jakkrit K.	JKK
27/9/12	2	For Implementation	The spreadsheet was developed by Soratus P.	SWN
8/4/2021	3	For Implementation	The spreadsheet was converted to MathCAD Prime by Wut T.	WUT

A. Input Data

Pipeline Parameters

Condition Type	$HT := \text{“Hydrostatic Test”}$ $OB := \text{“Operation Beginning”}$ $OE := \text{“Operation End”}$
Condition Selection	$Condition := OB$
Boundary Type	$RP := \text{“Restrained Pipe”}$ $UP := \text{“Unrestrained Pipe”}$
Boundary Selection	$Boundary := UP$
Pipe Outside Diameter	$OD := 8.625 \text{ in}$
Pipe Wall Thickness	$WT := 7.04 \text{ mm}$
Internal Corrosion Allowance	$CA := 3 \text{ mm}$
Specified Minimum Yield Strength (S)	$S := 450 \text{ MPa}$
Steel Density	$\rho_{st} := 7850 \frac{\text{kg}}{\text{m}^3}$
Young's Modulus	$E := 207 \text{ GPa}$
Fluid Content Density (Operation case)	$\rho_{cont} := 0 \frac{\text{kg}}{\text{m}^3}$
Coefficient of Thermal Expansion	$\alpha := 11.7 \cdot 10^{-6} \cdot \frac{1}{\Delta^\circ\text{C}}$

Design Parameters

Design Pressure	$P_d := 1.01 \text{ bar}$
Hydrotest Pressure	$P_h := 0 \cdot \text{bar}$
Design Temperature	$T_d := 23.3 \text{ }^\circ\text{C}$
Maximum Allowable Deflection in Pipe	$\delta_{max} := 200 \text{ mm}$

Coating Parameters

External Corrosion Coating Density	$\rho_{cor} := 950 \frac{\text{kg}}{\text{m}^3}$
External Corrosion Coating Thickness	$t_{cor} := 3.5 \text{ mm}$
Internal Corrosion Coating Density	$\rho_{in} := 0 \frac{\text{kg}}{\text{m}^3}$

Internal Corrosion Coating Thickness

$$t_{inc} := 0 \text{ mm}$$

Concrete Coating Density

$$\rho_{con} := 0 \frac{\text{kg}}{\text{m}^3}$$

Concrete Coating Thickness

$$t_{con} := 0 \text{ mm}$$

Environment Parameters

Water Density

$$\rho_w := 1000 \frac{\text{kg}}{\text{m}^3}$$

Mud Density

$$\rho_m := 1400 \frac{\text{kg}}{\text{m}^3}$$

$W := \text{"Water"}$

$M := \text{"Mud"}$

Determined Buoyancy Force from

$$\rho := W$$

Minimum Average Air Temperature

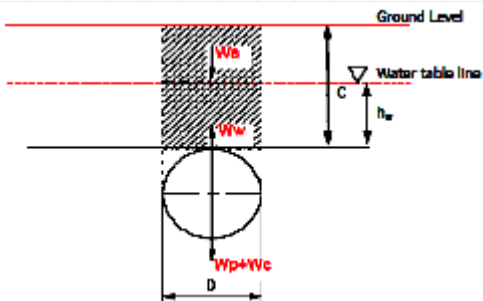
$$T_a := 23.3 \text{ }^\circ\text{C}$$

Mean Ground Temperature

$$T_g := 26 \text{ }^\circ\text{C}$$

Longitudinal Stress due to Other Axial Loading

$$S_x := 0 \text{ Pa}$$



Height of Backfill above The Top of Pipeline

$$C := 1.2 \text{ m}$$

Height of Water above The Top of Pipeline

$$h_w := C$$

Consider Effective Soil Weight (SW)

$$SW := \text{"No"}$$

(Yes or No)

Soil Parameters

Unit Weight of Wet Soil

$$\gamma_{wet} := 0 \frac{\text{kN}}{\text{m}^3}$$

Moisture Content of Wet Soil

$$w := 0\%$$

Screw Anchor Parameters

Minimum Hold on Capacity (ultimate)

$$Q_a := 6 \text{ kN}$$

Span Length of Screw Anchor

$$L_s := 67 \text{ m}$$

Minimum Angle Subtended by arc of Contact
between Pipe and Saddle (Degree)

$$\beta := 90$$

Empirical Installation torque coefficient

$$K_T := 10 \cdot \text{ft}^{-1}$$

Factor of Safety

Requirement for Negative Buoyancy Force

$$W_R := 0 \frac{\text{kg}}{\text{m}}$$

(0 if assigned the SF_b)

Safety Factor for Buoyancy Force

$$SF_b := 1.2$$

(0 if assigned the W_R)

B. Calculation

B-1 Parameter Calculation

Internal Pressure

$$P_i := \begin{cases} \text{if } Condition = \text{“Hydrostatic Test”} \\ \quad P_h \\ \text{else} \\ \quad P_d \end{cases}$$

Temperature Changed

$$\Delta T := \begin{cases} \text{if } Condition = \text{“Hydrostatic Test”} \\ \quad T_g - T_a \\ \text{else} \\ \quad T_d - T_a \end{cases}$$

Fluid Displacement Density

$$\rho_b := \begin{cases} \text{if } \rho = \text{“Water”} \\ \quad \rho_w \\ \text{else} \\ \quad \rho_m \end{cases}$$

Corroded Pipe Wall Thickness

$$WT := \begin{cases} \text{if } Condition = \text{“Operation End”} \\ \quad WT - CA \\ \text{else} \\ \quad WT \end{cases}$$

Internal Corrosion Coating Thickness

$$t_{in} := \begin{cases} \text{if } Condition = \text{“Operation End”} \\ \quad 0 \text{ mm} \\ \text{else} \\ \quad t_{inc} \end{cases}$$

Internal Corrosion Coating Inner Diameter

$$ID_{in} := OD - 2 WT - 2 t_{in}$$

Pipeline Internal Diameter

$$ID := OD - 2 WT$$

Outside Coating Diameter

$$D_{cor} := OD + 2 t_{cor}$$

Total Outside Pipe Diameter

$$D := D_{cor} + 2 t_{con}$$

Pipeline Moment of Inertia

$$I := \frac{\pi}{64} (OD^4 - ID^4)$$

Pipeline Sectional Elastic Modulus

$$Z := \frac{2 I}{OD}$$

Content Weight	$W_c := \begin{cases} \text{if } Condition = \text{“Hydrostatic Test”} \\ \frac{\rho_w \cdot \pi \cdot ID_{in}^2 \cdot g}{4} \\ \text{else} \\ \frac{\rho_{cont} \cdot \pi \cdot ID_{in}^2 \cdot g}{4} \end{cases}$
Internal Liner Weight	$W_{in} := \rho_{in} \cdot g \cdot \frac{\pi}{4} \cdot (ID^2 - ID_{in}^2)$
Pipeline Weight (Steel Weight)	$W_{st} := \rho_{st} \cdot g \cdot \frac{\pi}{4} \cdot (OD^2 - ID^2)$
External Corrosion Coating Weight	$W_{cor} := \rho_{cor} \cdot g \cdot \frac{\pi}{4} \cdot (D_{cor}^2 - OD^2)$
Concrete Coating Weight	$W_{con} := \rho_{con} \cdot g \cdot \frac{\pi}{4} \cdot (D^2 - D_{cor}^2)$
Weight of Pipe per Unit Length	$W_p := W_c + W_{in} + W_{st} + W_{cor} + W_{con}$
Unit Weight of Water	$\gamma_w := \rho_w \cdot g$
Unit Weight of Displacement Fluid	$\gamma_b := \rho_b \cdot g$
Unit Weight of dry soil	$\gamma_d := \frac{\gamma_{wet}}{1 + w}$
Effective Unit Weight	$\gamma_{eff} := \gamma_{wet} - \gamma_w$
Weight of fluid displaced by pipe per unit length	$W_b := \gamma_b \cdot \frac{\pi}{4} \cdot D^2$
Water Buoyancy Factor	$R_w := 1 - 0.33 \left(\frac{h_w}{C} \right)$
Earth Pressure Acting to Top of Pipeline	$P_v := \gamma_w \cdot h_w + R_w \cdot \gamma_d \cdot C$
Effective Weight of Soil above Pipe	$W_s := \begin{cases} \text{if } SW = \text{“Yes”} \\ (P_v - \gamma_w \cdot h_w) \cdot D \\ \text{else} \\ 0 \frac{N}{m} \end{cases}$
Net Upward Force due to Buoyancy per unit length	$F_b := (W_b + W_R \cdot g) - (W_p + W_s)$
Bending Moment	$M := \begin{cases} \text{if } Boundary = \text{“Restrained Pipe”} \\ \frac{1}{12} \cdot F_b \cdot L_s^2 \\ \text{else} \\ \frac{1}{8} \cdot F_b \cdot L_s^2 \end{cases}$

B-2 Buoyancy Safety Factor

Safety Factor

$$SF := \frac{W_p + W_s + \frac{Q_a}{L_s}}{W_b}$$

Safety Factor Checking

$$Check_{SFB} := \begin{cases} \text{if } SF > SF_b \\ \quad \parallel \\ \quad \text{"Pass"} \\ \text{else} \\ \quad \parallel \\ \quad \text{"Fail"} \end{cases}$$

B-3 Stress Calculation

Stress due to Saddle Load

$$S_S := (0.02 - 0.00012 \cdot (\beta - 90)) \cdot \frac{Q_a}{WT^2} \cdot \ln\left(\frac{OD}{2 WT}\right)$$

Hoop Stress
1: Bottom of Pipe
2: Top of Pipe

$$S_{H1} := \begin{cases} \text{if } \frac{OD}{WT} \geq 20 \\ \quad \parallel \\ \quad \frac{P_i \cdot OD}{2 WT} \\ \text{else} \\ \quad \parallel \\ \quad \frac{P_i \cdot (OD - WT)}{2 WT} \end{cases} \quad S_{H2} := \begin{cases} \text{if } \frac{OD}{WT} \geq 20 \\ \quad \parallel \\ \quad \frac{P_i \cdot OD}{2 WT} - S_S \\ \text{else} \\ \quad \parallel \\ \quad \frac{P_i \cdot (OD - WT)}{2 WT} - S_S \end{cases}$$

Longitudinal Stress

Longitudinal Stress due to Internal Pressure

$$S_{p1} := \begin{cases} \text{if } Boundary = \text{"Restrained Pipe"} \\ \quad \parallel \\ \quad 0.3 \cdot S_{H1} \\ \text{else} \\ \quad \parallel \\ \quad 0.5 \cdot S_{H1} \end{cases} \quad S_{p2} := \begin{cases} \text{if } Boundary = \text{"Restrained Pipe"} \\ \quad \parallel \\ \quad 0.3 \cdot S_{H2} \\ \text{else} \\ \quad \parallel \\ \quad 0.5 \cdot S_{H2} \end{cases}$$

Longitudinal Stress due to Thermal Expansion

$$S_T := \begin{cases} \text{if } Boundary = \text{"Restrained Pipe"} \\ \quad \parallel \\ \quad -E \cdot \alpha \cdot \Delta T \\ \text{else} \\ \quad \parallel \\ \quad 0 \text{ MPa} \end{cases}$$

Longitudinal Stress due to Bending Moment

$$S_B := \frac{M}{Z}$$

Net Longitudinal Stress in Pipeline

$$S_{L1} := S_{p1} + S_T + S_x + (S_B)$$

$$S_{L2} := S_{p2} + S_T + S_x - (S_B + S_S)$$

Maximum Longitudinal Stress

$$S_{Lmax} := \max(|S_{L1}|, |S_{L2}|)$$

Allowable Longitudinal Stress

$$S_{Lallow} := \begin{cases} \text{if } Boundary = \text{"Restrained Pipe"} \\ \quad \parallel \\ \quad 0.9 \cdot S \\ \text{else} \\ \quad \parallel \\ \quad 0.75 \cdot S \end{cases}$$

Longitudinal Stress Checking

$$Check_L := \begin{cases} \text{if } S_{Lmax} \leq S_{Lallow} \\ \quad \parallel \\ \quad \parallel \text{ "Pass" } \\ \quad \parallel \\ \text{else} \\ \quad \parallel \\ \quad \parallel \text{ "Fail" } \end{cases}$$

Combined Stress

Combined Stress for Restrained Pipeline $S_{com1} := |S_{L1} - S_{H1}|$

$$S_{com2} := |S_{L2} - S_{H2}|$$

Maximum Combined Stress $S_{com_max} := \max(|S_{com1}|, |S_{com2}|)$

Allowable Combined Stress $S_{com_allow} := 0.9 \cdot S$

Combined Stress Checking

$$Check_{com} := \begin{cases} \text{if } Boundary = \text{ "Unrestrained Pipe" } \\ \quad \parallel \\ \quad \parallel \text{ "Not Required" } \\ \quad \parallel \\ \text{else if } Boundary = \text{ "Restrained Pipe" } \wedge S_{com_max} \leq S_{com_allow} \\ \quad \parallel \\ \quad \parallel \text{ "Pass" } \\ \quad \parallel \\ \text{else} \\ \quad \parallel \\ \quad \parallel \text{ "Fail" } \end{cases}$$

Deflection

Maximum Deflection in Pipeline

$$\delta_{ac} := \begin{cases} \text{if } Boundary = \text{ "Restrained Pipe" } \\ \quad \parallel \\ \quad \parallel \frac{F_b \cdot L_s^4}{384 \cdot E \cdot I} \\ \quad \parallel \\ \text{else} \\ \quad \parallel \\ \quad \parallel \frac{F_b \cdot L_s^4}{185 \cdot E \cdot I} \end{cases}$$

Deflection Checking

$$Check_{de} := \begin{cases} \text{if } \delta_{ac} \leq \delta_{max} \\ \quad \parallel \\ \quad \parallel \text{ "Pass" } \\ \quad \parallel \\ \text{else} \\ \quad \parallel \\ \quad \parallel \text{ "Fail" } \end{cases}$$

Force

Anchor Force

$$F_1 := \begin{cases} \text{if } Boundary = \text{ "Restrained Pipe" } \\ \quad \parallel \\ \quad \parallel F_b \cdot L_s \\ \quad \parallel \\ \text{else} \\ \quad \parallel \\ \quad \parallel 2 \cdot \frac{5 \cdot F_b \cdot L_s}{8} \end{cases}$$

Anchor Force Checking

$$Check_{af} := \begin{cases} \text{if } F_1 \leq Q_a \\ \quad \parallel \\ \quad \parallel \text{ "Pass" } \\ \quad \parallel \\ \text{else} \\ \quad \parallel \\ \quad \parallel \text{ "Fail" } \end{cases}$$

Installation Torque

$$T_{min} := \frac{Q_a}{2 \cdot K_T}$$

C. Summary of Results

C-1 Safety Factor for Buoyancy Control Checking

Safety Factor for Buoyancy Control

$$SF = 1.202$$

Safety Factor for Buoyancy Control Checking

$$Check_{SF} = \text{"Pass"}$$

$$(SF > 1.2)$$

C-2 Net Longitudinal Stress Checking

Actual Longitudinal Stress

$$S_{L1} = 23.718 \text{ MPa}$$

$$S_{L2} = -32.115 \text{ MPa}$$

Maximum Longitudinal Stress

$$S_{Lmax} = 32.115 \text{ MPa}$$

Allowable Longitudinal Stress

$$S_{Lallow} = 337.5 \text{ MPa}$$

Longitudinal Stress Checking

$$Check_L = \text{"Pass"}$$

C-3 Combined Stress Checking

Actual Combined Stress

$$S_{com1} = 22.147 \text{ MPa}$$

$$S_{com2} = 27.041 \text{ MPa}$$

Maximum Combined Stress

$$S_{com_max} = 27.041 \text{ MPa}$$

Allowable Combined Stress

$$S_{com_allow} = 405 \text{ MPa}$$

Longitudinal Combined Checking

$$Check_{com} = \text{"Not Required"}$$

C-4 Deflection Checking

Maximum Deflection

$$\delta_{ac} = 196.328 \text{ mm}$$

Allowable Deflection

$$\delta_{max} = 200 \text{ mm}$$

Deflection Checking

$$Check_{de} = \text{"Pass"}$$

C-5 Anchor Force Checking

Upward Force due to Buoyancy per unit length

$$F_b = 0.01 \frac{\text{kN}}{\text{m}}$$

Maximum Anchor Force

$$F_1 = 0.824 \text{ kN}$$

Allowable Anchor Force

$$Q_a = 6 \text{ kN}$$

Net Downward Force

$$W_p + W_s + \frac{Q_a}{L_s} = 0.473 \frac{\text{kN}}{\text{m}}$$

Net Upward Force

$$W_b = 0.394 \frac{kN}{m}$$

Screw Installation Torque

$$T_{min} = 0.091 kN \cdot m$$

Anchor Force Checking

$$Check_{af} = \text{"Pass"}$$

APPENDIX C BUOYANCY CONTROL CALCULATION FOR OPERATION CASE (SCREW ANCHOR)



Technip Energies
Pipeline Engineering Department

Buoyancy Control Calculation (Screw Anchor)

**PROJECT : Basic Engineering Study for Aung Sinkha Development
Project Phase 1A**

PIPELINE NAME: APL02

Operation (Load case 1): Temperature is 70 °C - No. of Screw Anchor > 3

MAIN FEATURES

This spreadsheet performs the pipeline buoyancy control calculation for an onshore burial pipeline system. The following references are used in this calculation sheet.

- /1/ American Society of Mechanical Engineers, Pipeline Transportation Systems for Liquids and Slurries, ASME B31.4-2019.
- /2/ American Lifelines Alliance and American Society of Civil (ASCE), Guidelines for the Design of Buried Steel Pipe, July 2001.

REFERENCE DOCUMENTATION

This spreadsheet was originally developed for application to specific project. It has been further enhanced and consolidated. A dedicated manual has been issued and should be read in conjunction with the use of this MATHCAD sheet.

REVISION HISTORY

Date	Rev.	Status	Comment	Author
20/8/17	0	For Implementation	The spreadsheet was updated by adding unrestrained pipe and installation torque calculation	TKI
18/2/13	1	For Implementation	The spreadsheet was updated and validation by Jakkrit K.	JKK
27/9/12	2	For Implementation	The spreadsheet was developed by Soratus P.	SWN
8/4/2021	3	For Implementation	The spreadsheet was converted to MathCAD Prime by Wut T.	WUT

A. Input Data

Pipeline Parameters

Condition Type	$HT := \text{“Hydrostatic Test”}$ $OB := \text{“Operation Beginning”}$ $OE := \text{“Operation End”}$
Condition Selection	$Condition := OE$
Boundary Type	$RP := \text{“Restrained Pipe”}$ $UP := \text{“Unrestrained Pipe”}$
Boundary Selection	$Boundary := RP$
Pipe Outside Diameter	$OD := 8.625 \text{ in}$
Pipe Wall Thickness	$WT := 7.04 \text{ mm}$
Internal Corrosion Allowance	$CA := 3 \text{ mm}$
Specified Minimum Yield Strength (S)	$S := 450 \text{ MPa}$
Steel Density	$\rho_{st} := 7850 \frac{\text{kg}}{\text{m}^3}$
Young's Modulus	$E := 207 \text{ GPa}$
Fluid Content Density (Operation case)	$\rho_{cont} := 689.8 \frac{\text{kg}}{\text{m}^3}$
Coefficient of Thermal Expansion	$\alpha := 11.7 \cdot 10^{-6} \cdot \frac{1}{\Delta^\circ\text{C}}$

Design Parameters

Design Pressure	$P_d := 48.7 \text{ bar}$
Hydrotest Pressure	$P_h := 60.9$
Design Temperature	$T_d := 70 \text{ }^\circ\text{C}$
Maximum Allowable Deflection in Pipe	$\delta_{max} := 200 \text{ mm}$

Coating Parameters

External Corrosion Coating Density	$\rho_{cor} := 950 \frac{\text{kg}}{\text{m}^3}$
External Corrosion Coating Thickness	$t_{cor} := 3.5 \text{ mm}$
Internal Corrosion Coating Density	$\rho_{in} := 0 \frac{\text{kg}}{\text{m}^3}$
Internal Corrosion Coating Thickness	$t_{inc} := 0 \text{ mm}$

Concrete Coating Density

$$\rho_{con} := 0 \frac{kg}{m^3}$$

Concrete Coating Thickness

$$t_{con} := 0 \text{ mm}$$

Environment Parameters

Water Density

$$\rho_w := 1000 \frac{kg}{m^3}$$

Mud Density

$$\rho_m := 1400 \frac{kg}{m^3}$$

$W := \text{"Water"}$

$M := \text{"Mud"}$

Determined Buoyancy Force from

$$\rho := W$$

Minimum Average Air Temperature

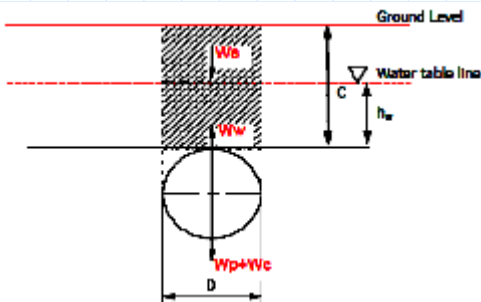
$$T_a := 23.3 \text{ } ^\circ\text{C}$$

Mean Ground Temperature

$$T_g := 26 \text{ } ^\circ\text{C}$$

Longitudinal Stress due to Other Axial Loading

$$S_x := 0 \text{ Pa}$$



Height of Backfill above The Top of Pipeline

$$C := 1.2 \text{ m}$$

Height of Water above The Top of Pipeline

$$h_w := C$$

Consider Effective Soil Weight (SW)

$$SW := \text{"No"}$$

(Yes or No)

Soil Parameters

Unit Weight of Wet Soil

$$\gamma_{wet} := 0 \frac{kN}{m^3}$$

Moisture Content of Wet Soil

$$w := 0\%$$

Screw Anchor Parameters

Minimum Hold on Capacity (ultimate)

$$Q_a := 0.2 \text{ kN}$$

Span Length of Screw Anchor

$$L_s := 42 \text{ m}$$

Minimum Angle Subtended by arc of Contact
between Pipe and Saddle (Degree)

$$\beta := 90$$

Empirical Installation torque coefficient

$$K_T := 10 \cdot ft^{-1}$$

Factor of Safety

Requirement for Negative Buoyancy Force

$$W_R := 0 \frac{kg}{m}$$

(0 if assigned the SF_b)

Safety Factor for Buoyancy Force

$$SF_b := 1.2$$

(0 if assigned the W_R)

B. Calculation

B-1 Parameter Calculation

Internal Pressure

$$P_i := \begin{cases} \text{if } Condition = \text{"Hydrostatic Test"} \\ \quad P_h \\ \text{else} \\ \quad P_d \end{cases}$$

Temperature Changed

$$\Delta T := \begin{cases} \text{if } Condition = \text{"Hydrostatic Test"} \\ \quad T_g - T_a \\ \text{else} \\ \quad T_d - T_a \end{cases}$$

Fluid Displacement Density

$$\rho_b := \begin{cases} \text{if } \rho = \text{"Water"} \\ \quad \rho_w \\ \text{else} \\ \quad \rho_m \end{cases}$$

Corroded Pipe Wall Thickness

$$WT := \begin{cases} \text{if } Condition = \text{"Operation End"} \\ \quad WT - CA \\ \text{else} \\ \quad WT \end{cases}$$

Internal Corrosion Coating Thickness

$$t_{in} := \begin{cases} \text{if } Condition = \text{"Operation End"} \\ \quad 0 \text{ mm} \\ \text{else} \\ \quad t_{inc} \end{cases}$$

Internal Corrosion Coating Inner Diameter

$$ID_{in} := OD - 2 WT - 2 t_{in}$$

Pipeline Internal Diameter

$$ID := OD - 2 WT$$

Outside Coating Diameter

$$D_{cor} := OD + 2 t_{cor}$$

Total Outside Pipe Diameter

$$D := D_{cor} + 2 t_{con}$$

Pipeline Moment of Inertia

$$I := \frac{\pi}{64} (OD^4 - ID^4)$$

Pipeline Sectional Elastic Modulus

$$Z := \frac{2 I}{OD}$$

Content Weight	$W_c := \begin{cases} \text{if } Condition = \text{“Hydrostatic Test”} \\ \frac{\rho_w \cdot \pi \cdot ID_{in}^2 \cdot g}{4} \\ \text{else} \\ \frac{\rho_{cont} \cdot \pi \cdot ID_{in}^2 \cdot g}{4} \end{cases}$
Internal Liner Weight	$W_{in} := \rho_{in} \cdot g \cdot \frac{\pi}{4} \cdot (ID^2 - ID_{in}^2)$
Pipeline Weight (Steel Weight)	$W_{st} := \rho_{st} \cdot g \cdot \frac{\pi}{4} \cdot (OD^2 - ID^2)$
External Corrosion Coating Weight	$W_{cor} := \rho_{cor} \cdot g \cdot \frac{\pi}{4} \cdot (D_{cor}^2 - OD^2)$
Concrete Coating Weight	$W_{con} := \rho_{con} \cdot g \cdot \frac{\pi}{4} \cdot (D^2 - D_{cor}^2)$
Weight of Pipe per Unit Length	$W_p := W_c + W_{in} + W_{st} + W_{cor} + W_{con}$
Unit Weight of Water	$\gamma_w := \rho_w \cdot g$
Unit Weight of Displacement Fluid	$\gamma_b := \rho_b \cdot g$
Unit Weight of dry soil	$\gamma_d := \frac{\gamma_{wet}}{1 + w}$
Effective Unit Weight	$\gamma_{eff} := \gamma_{wet} - \gamma_w$
Weight of fluid displaced by pipe per unit length	$W_b := \gamma_b \cdot \frac{\pi}{4} \cdot D^2$
Water Buoyancy Factor	$R_w := 1 - 0.33 \left(\frac{h_w}{C} \right)$
Earth Pressure Acting to Top of Pipeline	$P_v := \gamma_w \cdot h_w + R_w \cdot \gamma_d \cdot C$
Effective Weight of Soil above Pipe	$W_s := \begin{cases} \text{if } SW = \text{“Yes”} \\ (P_v - \gamma_w \cdot h_w) \cdot D \\ \text{else} \\ 0 \frac{N}{m} \end{cases}$
Net Upward Force due to Buoyancy per unit length	$F_b := (W_b + W_R \cdot g) - (W_p + W_s)$
Bending Moment	$M := \begin{cases} \text{if } Boundary = \text{“Restrained Pipe”} \\ \frac{1}{12} \cdot F_b \cdot L_s^2 \\ \text{else} \\ \frac{1}{8} \cdot F_b \cdot L_s^2 \end{cases}$

B-2 Buoyancy Safety Factor

$$\text{Safety Factor} \quad SF := \frac{W_p + W_s + \frac{Q_a}{L_s}}{W_b}$$

Safety Factor Checking

$$\text{Check}_{SF} := \begin{cases} \text{if } SF > SF_b \\ \quad \text{"Pass"} \\ \text{else} \\ \quad \text{"Fail"} \end{cases}$$

B-3 Stress Calculation

Stress due to Saddle Load

$$S_s := (0.02 - 0.00012 \cdot (\beta - 90)) \cdot \frac{Q_a}{WT^2} \cdot \ln\left(\frac{OD}{2 WT}\right)$$

Hoop Stress

1: Bottom of Pipe
2: Top of Pipe

$$S_{H1} := \begin{cases} \text{if } \frac{OD}{WT} \geq 20 \\ \quad \frac{P_i \cdot OD}{2 WT} \\ \text{else} \\ \quad \frac{P_i \cdot (OD - WT)}{2 WT} \end{cases} \quad S_{H2} := \begin{cases} \text{if } \frac{OD}{WT} \geq 20 \\ \quad \frac{P_i \cdot OD}{2 WT} - S_s \\ \text{else} \\ \quad \frac{P_i \cdot (OD - WT)}{2 WT} - S_s \end{cases}$$

Longitudinal Stress

Longitudinal Stress due to Internal Pressure

$$S_{p1} := \begin{cases} \text{if } \text{Boundary} = \text{"Restrained Pipe"} \\ \quad 0.3 \cdot S_{H1} \\ \text{else} \\ \quad 0.5 \cdot S_{H1} \end{cases} \quad S_{p2} := \begin{cases} \text{if } \text{Boundary} = \text{"Restrained Pipe"} \\ \quad 0.3 \cdot S_{H2} \\ \text{else} \\ \quad 0.5 \cdot S_{H2} \end{cases}$$

Longitudinal Stress due to Thermal Expansion

$$S_T := \begin{cases} \text{if } \text{Boundary} = \text{"Restrained Pipe"} \\ \quad -E \cdot \alpha \cdot \Delta T \\ \text{else} \\ \quad 0 \text{ MPa} \end{cases}$$

Longitudinal Stress due to Bending Moment

$$S_B := \frac{M}{Z}$$

Net Longitudinal Stress in Pipeline

$$S_{L1} := S_T + S_{p1} + S_x + (S_B)$$

$$S_{L2} := S_T + S_{p2} + S_x - S_B$$

Maximum Longitudinal Stress

$$S_{Lmax} := \max(|S_{L1}|, |S_{L2}|)$$

Allowable Longitudinal Stress

$$S_{Lallow} := \begin{cases} \text{if } \text{Boundary} = \text{"Restrained Pipe"} \\ \quad 0.9 \cdot S \\ \text{else} \\ \quad 0.75 \cdot S \end{cases}$$

Longitudinal Stress Checking

$$Check_L := \begin{cases} \text{if } S_{Lmax} \leq S_{Lallow} \\ \quad \text{"Pass"} \\ \text{else} \\ \quad \text{"Fail"} \end{cases}$$

Combined Stress

Combined Stress for Restrained Pipeline $S_{com1} := |S_{L1} - S_{H1}|$

$$S_{com2} := |S_{L2} - S_{H2}|$$

Maximum Combined Stress

$$S_{com_max} := \max(|S_{com1}|, |S_{com2}|)$$

Allowable Combined Stress

$$S_{com_allow} := 0.9 \cdot S$$

Combined Stress Checking

$$Check_{com} := \begin{cases} \text{if } Boundary = \text{"Unrestrained Pipe"} \\ \quad \text{"Not Required"} \\ \text{else if } Boundary = \text{"Restrained Pipe"} \wedge S_{com_max} \leq S_{com_allow} \\ \quad \text{"Pass"} \\ \text{else} \\ \quad \text{"Fail"} \end{cases}$$

Deflection

Maximum Deflection in Pipeline

$$\delta_{ac} := \begin{cases} \text{if } Boundary = \text{"Restrained Pipe"} \\ \quad \frac{F_b \cdot L_s^4}{384 \cdot E \cdot I} \\ \text{else} \\ \quad \frac{F_b \cdot L_s^4}{185 \cdot E \cdot I} \end{cases}$$

Deflection Checking

$$Check_{de} := \begin{cases} \text{if } \delta_{ac} \leq \delta_{max} \\ \quad \text{"Pass"} \\ \text{else} \\ \quad \text{"Fail"} \end{cases}$$

Force

Anchor Force

$$F_1 := \begin{cases} \text{if } Boundary = \text{"Restrained Pipe"} \\ \quad F_b \cdot L_s \\ \text{else} \\ \quad 2 \cdot \frac{5 \cdot F_b \cdot L_s}{8} \end{cases}$$

Anchor Force Checking

$$Check_{af} := \begin{cases} \text{if } F_1 \leq Q_a \\ \quad \text{"Pass"} \\ \text{else} \\ \quad \text{"Fail"} \end{cases}$$

Installation Torque

$$T_{min} := \frac{Q_a}{2 \cdot K_T}$$

C. Summary of Results

C-1 Safety Factor for Buoyancy Control Checking

Safety Factor for Buoyancy Control

$$SF = 1.205$$

Safety Factor for Buoyancy Control Checking

$$Check_{SFB} = \text{"Pass"}$$

(SF > 1.2)

C-2 Net Longitudinal Stress Checking

Actual Longitudinal Stress

$$S_{L1} = -150.807 \text{ MPa}$$

$$S_{L2} = 3.584 \text{ MPa}$$

Maximum Longitudinal Stress

$$S_{Lmax} = 150.807 \text{ MPa}$$

Allowable Longitudinal Stress

$$S_{Lallow} = 405 \text{ MPa}$$

Longitudinal Stress Checking

$$Check_L = \text{"Pass"}$$

C-3 Combined Stress Checking

Actual Combined Stress

$$S_{com1} = 282.848 \text{ MPa}$$

$$S_{com2} = 127.649 \text{ MPa}$$

Maximum Combined Stress

$$S_{com,max} = 282.848 \text{ MPa}$$

Allowable Combined Stress

$$S_{com,allow} = 405 \text{ MPa}$$

Longitudinal Combined Checking

$$Check_{com} = \text{"Pass"}$$

C-4 Deflection Checking

Maximum Deflection

$$\delta_{ac} = -187.97 \text{ mm}$$

Allowable Deflection

$$\delta_{max} = 200 \text{ mm}$$

Deflection Checking

$$Check_{de} = \text{"Pass"}$$

C-5 Anchor Force Checking

Upward Force due to Buoyancy per unit length

$$F_b = -0.076 \frac{\text{kN}}{\text{m}}$$

Maximum Anchor Force

$$F_1 = -3.182 \text{ kN}$$

Allowable Anchor Force

$$Q_a = 0.2 \text{ kN}$$

Net Downward Force

$$W_p + W_s + \frac{Q_a}{L_s} = 0.474 \frac{\text{kN}}{\text{m}}$$

Net Upward Force

$$W_b = 0.394 \frac{kN}{m}$$

Screw Installation Torque

$$T_{min} = 0.003 kN \cdot m$$

Anchor Force Checking

$$Check_{af} = \text{"Pass"}$$



Technip Energies
Pipeline Engineering Department

Buoyancy Control Calculation (Screw Anchor)

**PROJECT : Basic Engineering Study for Aung Sinkha Development
Project Phase 1A**

PIPELINE NAME: APL02

Operation (Load Case 2): Temperature is 0 °C - No. of Screw Anchor > 3

MAIN FEATURES

This spreadsheet performs the pipeline buoyancy control calculation for an onshore burial pipeline system. The following references are used in this calculation sheet.

- /1/ American Society of Mechanical Engineers, Pipeline Transportation Systems for Liquids and Slurries, ASME B31.4-2019.
- /2/ American Lifelines Alliance and American Society of Civil (ASCE), Guidelines for the Design of Buried Steel Pipe, July 2001.

REFERENCE DOCUMENTATION

This spreadsheet was originally developed for application to specific project. It has been further enhanced and consolidated. A dedicated manual has been issued and should be read in conjunction with the use of this MATHCAD sheet.

REVISION HISTORY

Date	Rev.	Status	Comment	Author
20/8/17	0	For Implementation	The spreadsheet was updated by adding unrestrained pipe and installation torque calculation	TKI
18/2/13	1	For Implementation	The spreadsheet was updated and validation by Jakkrit K.	JKK
27/9/12	2	For Implementation	The spreadsheet was developed by Soratus P.	SWN
8/4/2021	3	For Implementation	The spreadsheet was converted to MathCAD Prime by Wut T.	WUT

A. Input Data

Pipeline Parameters

Condition Type	$HT := \text{“Hydrostatic Test”}$ $OB := \text{“Operation Beginning”}$ $OE := \text{“Operation End”}$
Condition Selection	$Condition := OE$
Boundary Type	$RP := \text{“Restrained Pipe”}$ $UP := \text{“Unrestrained Pipe”}$
Boundary Selection	$Boundary := RP$
Pipe Outside Diameter	$OD := 8.625 \text{ in}$
Pipe Wall Thickness	$WT := 7.04 \text{ mm}$
Internal Corrosion Allowance	$CA := 3 \text{ mm}$
Specified Minimum Yield Strength (S)	$S := 450 \text{ MPa}$
Steel Density	$\rho_{st} := 7850 \frac{\text{kg}}{\text{m}^3}$
Young's Modulus	$E := 207 \text{ GPa}$
Fluid Content Density (Operation case)	$\rho_{cont} := 689.8 \frac{\text{kg}}{\text{m}^3}$
Coefficient of Thermal Expansion	$\alpha := 11.7 \cdot 10^{-6} \cdot \frac{1}{\Delta^\circ\text{C}}$

Design Parameters

Design Pressure	$P_d := 48.7 \text{ bar}$
Hydrotest Pressure	$P_h := 60.9$
Design Temperature	$T_d := 0 \text{ }^\circ\text{C}$
Maximum Allowable Deflection in Pipe	$\delta_{max} := 200 \text{ mm}$

Coating Parameters

External Corrosion Coating Density	$\rho_{cor} := 950 \frac{\text{kg}}{\text{m}^3}$
External Corrosion Coating Thickness	$t_{cor} := 3.5 \text{ mm}$
Internal Corrosion Coating Density	$\rho_{in} := 0 \frac{\text{kg}}{\text{m}^3}$
Internal Corrosion Coating Thickness	$t_{inc} := 0 \text{ mm}$

Concrete Coating Density

$$\rho_{con} := 0 \frac{kg}{m^3}$$

Concrete Coating Thickness

$$t_{con} := 0 \text{ mm}$$

Environment Parameters

Water Density

$$\rho_w := 1000 \frac{kg}{m^3}$$

Mud Density

$$\rho_m := 1400 \frac{kg}{m^3}$$

$W := \text{"Water"}$

$M := \text{"Mud"}$

Determined Buoyancy Force from

$$\rho := W$$

Minimum Average Air Temperature

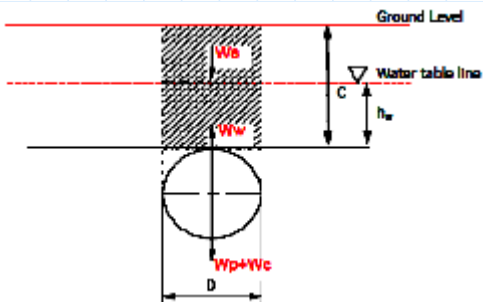
$$T_a := 23.3 \text{ }^\circ\text{C}$$

Mean Ground Temperature

$$T_g := 26 \text{ }^\circ\text{C}$$

Longitudinal Stress due to Other Axial Loading

$$S_x := 0 \text{ Pa}$$



Height of Backfill above The Top of Pipeline

$$C := 1.2 \text{ m}$$

Height of Water above The Top of Pipeline

$$h_w := C$$

Consider Effective Soil Weight (SW)

$$SW := \text{"No"}$$

(Yes or No)

Soil Parameters

Unit Weight of Wet Soil

$$\gamma_{wet} := 0 \frac{kN}{m^3}$$

Moisture Content of Wet Soil

$$w := 0\%$$

Screw Anchor Parameters

Minimum Hold on Capacity (ultimate)

$$Q_a := 0.2 \text{ kN}$$

Span Length of Screw Anchor

$$L_s := 42 \text{ m}$$

Minimum Angle Subtended by arc of Contact
between Pipe and Saddle (Degree)

$$\beta := 90$$

Empirical Installation torque coefficient

$$K_T := 10 \cdot ft^{-1}$$

Factor of Safety

Requirement for Negative Buoyancy Force

$$W_R := 0 \frac{kg}{m}$$

(0 if assigned the SF_b)

Safety Factor for Buoyancy Force

$$SF_b := 1.2$$

(0 if assigned the W_R)

B. Calculation

B-1 Parameter Calculation

Internal Pressure

$$P_i := \begin{cases} \text{if } Condition = \text{“Hydrostatic Test”} \\ \quad \parallel P_h \\ \text{else} \\ \quad \parallel P_d \end{cases}$$

Temperature Changed

$$\Delta T := \begin{cases} \text{if } Condition = \text{“Hydrostatic Test”} \\ \quad \parallel T_g - T_a \\ \text{else} \\ \quad \parallel T_d - T_a \end{cases}$$

Fluid Displacement Density

$$\rho_b := \begin{cases} \text{if } \rho = \text{“Water”} \\ \quad \parallel \rho_w \\ \text{else} \\ \quad \parallel \rho_m \end{cases}$$

Corroded Pipe Wall Thickness

$$WT := \begin{cases} \text{if } Condition = \text{“Operation End”} \\ \quad \parallel WT - CA \\ \text{else} \\ \quad \parallel WT \end{cases}$$

Internal Corrosion Coating Thickness

$$t_{in} := \begin{cases} \text{if } Condition = \text{“Operation End”} \\ \quad \parallel 0 \text{ mm} \\ \text{else} \\ \quad \parallel t_{inc} \end{cases}$$

Internal Corrosion Coating Inner Diameter

$$ID_{in} := OD - 2 WT - 2 t_{in}$$

Pipeline Internal Diameter

$$ID := OD - 2 WT$$

Outside Coating Diameter

$$D_{cor} := OD + 2 t_{cor}$$

Total Outside Pipe Diameter

$$D := D_{cor} + 2 t_{con}$$

Pipeline Moment of Inertia

$$I := \frac{\pi}{64} (OD^4 - ID^4)$$

Pipeline Sectional Elastic Modulus

$$Z := \frac{2 I}{OD}$$

Content Weight	$W_c := \begin{cases} \text{if } Condition = \text{"Hydrostatic Test"} \\ \frac{\rho_w \cdot \pi \cdot ID_{in}^2 \cdot g}{4} \\ \text{else} \\ \frac{\rho_{cont} \cdot \pi \cdot ID_{in}^2 \cdot g}{4} \end{cases}$
Internal Liner Weight	$W_{in} := \rho_{in} \cdot g \cdot \frac{\pi}{4} \cdot (ID^2 - ID_{in}^2)$
Pipeline Weight (Steel Weight)	$W_{st} := \rho_{st} \cdot g \cdot \frac{\pi}{4} \cdot (OD^2 - ID^2)$
External Corrosion Coating Weight	$W_{cor} := \rho_{cor} \cdot g \cdot \frac{\pi}{4} \cdot (D_{cor}^2 - OD^2)$
Concrete Coating Weight	$W_{con} := \rho_{con} \cdot g \cdot \frac{\pi}{4} \cdot (D^2 - D_{cor}^2)$
Weight of Pipe per Unit Length	$W_p := W_c + W_{in} + W_{st} + W_{cor} + W_{con}$
Unit Weight of Water	$\gamma_w := \rho_w \cdot g$
Unit Weight of Displacement Fluid	$\gamma_b := \rho_b \cdot g$
Unit Weight of dry soil	$\gamma_d := \frac{\gamma_{wet}}{1 + w}$
Effective Unit Weight	$\gamma_{eff} := \gamma_{wet} - \gamma_w$
Weight of fluid displaced by pipe per unit length	$W_b := \gamma_b \cdot \frac{\pi}{4} \cdot D^2$
Water Buoyancy Factor	$R_w := 1 - 0.33 \left(\frac{h_w}{C} \right)$
Earth Pressure Acting to Top of Pipeline	$P_v := \gamma_w \cdot h_w + R_w \cdot \gamma_d \cdot C$
Effective Weight of Soil above Pipe	$W_s := \begin{cases} \text{if } SW = \text{"Yes"} \\ (P_v - \gamma_w \cdot h_w) \cdot D \\ \text{else} \\ 0 \frac{N}{m} \end{cases}$
Net Upward Force due to Buoyancy per unit length	$F_b := (W_b + W_R \cdot g) - (W_p + W_s)$
Bending Moment	$M := \begin{cases} \text{if } Boundary = \text{"Restrained Pipe"} \\ \frac{1}{12} \cdot F_b \cdot L_s^2 \\ \text{else} \\ \frac{1}{8} \cdot F_b \cdot L_s^2 \end{cases}$

B-2 Buoyancy Safety Factor

$$\text{Safety Factor} \quad SF := \frac{W_p + W_s + \frac{Q_a}{L_s}}{W_b}$$

Safety Factor Checking

$$\text{Check}_{SFb} := \begin{cases} \text{if } SF > SF_b \\ \quad \text{"Pass"} \\ \text{else} \\ \quad \text{"Fail"} \end{cases}$$

B-3 Stress Calculation

Stress due to Saddle Load

$$S_s := (0.02 - 0.00012 \cdot (\beta - 90)) \cdot \frac{Q_a}{WT^2} \cdot \ln\left(\frac{OD}{2 WT}\right)$$

Hoop Stress

1: Bottom of Pipe
2: Top of Pipe

$$S_{H1} := \begin{cases} \text{if } \frac{OD}{WT} \geq 20 \\ \quad \frac{P_i \cdot OD}{2 WT} \\ \text{else} \\ \quad \frac{P_i \cdot (OD - WT)}{2 WT} \end{cases} \quad S_{H2} := \begin{cases} \text{if } \frac{OD}{WT} \geq 20 \\ \quad \frac{P_i \cdot OD}{2 WT} - S_s \\ \text{else} \\ \quad \frac{P_i \cdot (OD - WT)}{2 WT} - S_s \end{cases}$$

Longitudinal Stress

Longitudinal Stress due to Internal Pressure

$$S_{p1} := \begin{cases} \text{if } \text{Boundary} = \text{"Restrained Pipe"} \\ \quad 0.3 \cdot S_{H1} \\ \text{else} \\ \quad 0.5 \cdot S_{H1} \end{cases} \quad S_{p2} := \begin{cases} \text{if } \text{Boundary} = \text{"Restrained Pipe"} \\ \quad 0.3 \cdot S_{H2} \\ \text{else} \\ \quad 0.5 \cdot S_{H2} \end{cases}$$

Longitudinal Stress due to Thermal Expansion

$$S_T := \begin{cases} \text{if } \text{Boundary} = \text{"Restrained Pipe"} \\ \quad -E \cdot \alpha \cdot \Delta T \\ \text{else} \\ \quad 0 \text{ MPa} \end{cases}$$

Longitudinal Stress due to Bending Moment

$$S_B := \frac{M}{Z}$$

Net Longitudinal Stress in Pipeline

$$S_{L1} := S_T + S_{p1} + S_x + (S_B)$$

$$S_{L2} := S_T + S_{p2} + S_x - S_B$$

Maximum Longitudinal Stress

$$S_{Lmax} := \max(|S_{L1}|, |S_{L2}|)$$

Allowable Longitudinal Stress

$$S_{Lallow} := \begin{cases} \text{if } \text{Boundary} = \text{"Restrained Pipe"} \\ \quad 0.9 \cdot S \\ \text{else} \\ \quad 0.75 \cdot S \end{cases}$$

Longitudinal Stress Checking

$$Check_L := \begin{cases} \text{if } S_{Lmax} \leq S_{Lallow} \\ \quad \text{"Pass"} \\ \text{else} \\ \quad \text{"Fail"} \end{cases}$$

Combined Stress

Combined Stress for Restrained Pipeline $S_{com1} := |S_{L1} - S_{H1}|$

$$S_{com2} := |S_{L2} - S_{H2}|$$

Maximum Combined Stress $S_{com_max} := \max(|S_{com1}|, |S_{com2}|)$

Allowable Combined Stress $S_{com_allow} := 0.9 \cdot S$

Combined Stress Checking

$$Check_{com} := \begin{cases} \text{if } Boundary = \text{"Unrestrained Pipe"} \\ \quad \text{"Not Required"} \\ \text{else if } Boundary = \text{"Restrained Pipe"} \wedge S_{com_max} \leq S_{com_allow} \\ \quad \text{"Pass"} \\ \text{else} \\ \quad \text{"Fail"} \end{cases}$$

Deflection

Maximum Deflection in Pipeline

$$\delta_{ac} := \begin{cases} \text{if } Boundary = \text{"Restrained Pipe"} \\ \quad \frac{F_b \cdot L_s^4}{384 \cdot E \cdot I} \\ \text{else} \\ \quad \frac{F_b \cdot L_s^4}{185 \cdot E \cdot I} \end{cases}$$

Deflection Checking

$$Check_{de} := \begin{cases} \text{if } \delta_{ac} \leq \delta_{max} \\ \quad \text{"Pass"} \\ \text{else} \\ \quad \text{"Fail"} \end{cases}$$

Force

Anchor Force

$$F_1 := \begin{cases} \text{if } Boundary = \text{"Restrained Pipe"} \\ \quad F_b \cdot L_s \\ \text{else} \\ \quad 2 \cdot \frac{5 \cdot F_b \cdot L_s}{8} \end{cases}$$

Anchor Force Checking

$$Check_{af} := \begin{cases} \text{if } F_1 \leq Q_a \\ \quad \text{"Pass"} \\ \text{else} \\ \quad \text{"Fail"} \end{cases}$$

Installation Torque

$$T_{min} := \frac{Q_a}{2 \cdot K_T}$$

C. Summary of Results

C-1 Safety Factor for Buoyancy Control Checking

Safety Factor for Buoyancy Control

$$SF = 1.205$$

Safety Factor for Buoyancy Control Checking

$$Check_{SFB} = \text{"Pass"}$$

(SF > 1.2)

C-2 Net Longitudinal Stress Checking

Actual Longitudinal Stress

$$S_{L1} = 18.726 \text{ MPa}$$

$$S_{L2} = 173.117 \text{ MPa}$$

Maximum Longitudinal Stress

$$S_{Lmax} = 173.117 \text{ MPa}$$

Allowable Longitudinal Stress

$$S_{Lallow} = 405 \text{ MPa}$$

Longitudinal Stress Checking

$$Check_L = \text{"Pass"}$$

C-3 Combined Stress Checking

Actual Combined Stress

$$S_{com1} = 113.315 \text{ MPa}$$

$$S_{com2} = 41.884 \text{ MPa}$$

Maximum Combined Stress

$$S_{com,max} = 113.315 \text{ MPa}$$

Allowable Combined Stress

$$S_{com,allow} = 405 \text{ MPa}$$

Longitudinal Combined Checking

$$Check_{com} = \text{"Pass"}$$

C-4 Deflection Checking

Maximum Deflection

$$\delta_{ac} = -187.97 \text{ mm}$$

Allowable Deflection

$$\delta_{max} = 200 \text{ mm}$$

Deflection Checking

$$Check_{de} = \text{"Pass"}$$

C-5 Anchor Force Checking

Upward Force due to Buoyancy per unit length

$$F_b = -0.076 \frac{kN}{m}$$

Maximum Anchor Force

$$F_1 = -3.182 \text{ kN}$$

Allowable Anchor Force

$$Q_a = 0.2 \text{ kN}$$

Net Downward Force

$$W_p + W_s + \frac{Q_a}{L_s} = 0.474 \frac{kN}{m}$$

Net Upward Force

$$W_b = 0.394 \frac{kN}{m}$$

Screw Installation Torque

$$T_{min} = 0.003 kN \cdot m$$

Anchor Force Checking

$$Check_{af} = \text{"Pass"}$$



Technip Energies
Pipeline Engineering Department

Buoyancy Control Calculation (Screw Anchor)

**PROJECT : Basic Engineering Study for Aung Sinkha Development
Project Phase 1A**

PIPELINE NAME: APL02

Operation: No. of Screw Anchor \leq 3

MAIN FEATURES

This spreadsheet performs the pipeline buoyancy control calculation for an onshore burial pipeline system. The following references are used in this calculation sheet.

- /1/ American Society of Mechanical Engineers, Pipeline Transportation Systems for Liquids and Slurries, ASME B31.4-2019.
- /2/ American Lifelines Alliance and American Society of Civil (ASCE), Guidelines for the Design of Buried Steel Pipe, July 2001.

REFERENCE DOCUMENTATION

This spreadsheet was originally developed for application to specific project. It has been further enhanced and consolidated. A dedicated manual has been issued and should be read in conjunction with the use of this MATHCAD sheet.

REVISION HISTORY

Date	Rev.	Status	Comment	Author
20/8/17	0	For Implementation	The spreadsheet was updated by adding unrestrained pipe and installation torque calculation	TKI
18/2/13	1	For Implementation	The spreadsheet was updated and validation by Jakkrit K.	JKK
27/9/12	2	For Implementation	The spreadsheet was developed by Soratus P.	SWN
8/4/2021	3	For Implementation	The spreadsheet was converted to MathCAD Prime by Wut T.	WUT

A. Input Data

Pipeline Parameters

Condition Type	$HT := \text{“Hydrostatic Test”}$ $OB := \text{“Operation Beginning”}$ $OE := \text{“Operation End”}$
Condition Selection	$Condition := OE$
Boundary Type	$RP := \text{“Restrained Pipe”}$ $UP := \text{“Unrestrained Pipe”}$
Boundary Selection	$Boundary := UP$
Pipe Outside Diameter	$OD := 8.625 \text{ in}$
Pipe Wall Thickness	$WT := 7.04 \text{ mm}$
Internal Corrosion Allowance	$CA := 3 \text{ mm}$
Specified Minimum Yield Strength (S)	$S := 450 \text{ MPa}$
Steel Density	$\rho_{st} := 7850 \frac{\text{kg}}{\text{m}^3}$
Young's Modulus	$E := 207 \text{ GPa}$
Fluid Content Density (Operation case)	$\rho_{cont} := 689.8 \frac{\text{kg}}{\text{m}^3}$
Coefficient of Thermal Expansion	$\alpha := 11.7 \cdot 10^{-6} \cdot \frac{1}{\Delta^\circ\text{C}}$

Design Parameters

Design Pressure	$P_d := 48.7 \text{ bar}$
Hydrotest Pressure	$P_h := 1.25 \cdot P_d$
Design Temperature	$T_d := 70 \text{ }^\circ\text{C}$
Maximum Allowable Deflection in Pipe	$\delta_{max} := 200 \text{ mm}$

Coating Parameters

External Corrosion Coating Density	$\rho_{cor} := 950 \frac{\text{kg}}{\text{m}^3}$
External Corrosion Coating Thickness	$t_{cor} := 3.5 \text{ mm}$
Internal Corrosion Coating Density	$\rho_{in} := 0 \frac{\text{kg}}{\text{m}^3}$

Internal Corrosion Coating Thickness

$$t_{inc} := 0 \text{ mm}$$

Concrete Coating Density

$$\rho_{con} := 0 \frac{\text{kg}}{\text{m}^3}$$

Concrete Coating Thickness

$$t_{con} := 0 \text{ mm}$$

Environment Parameters

Water Density

$$\rho_w := 1000 \frac{\text{kg}}{\text{m}^3}$$

Mud Density

$$\rho_m := 1400 \frac{\text{kg}}{\text{m}^3}$$

$W := \text{"Water"}$

$M := \text{"Mud"}$

Determined Buoyancy Force from

$$\rho := W$$

Minimum Average Air Temperature

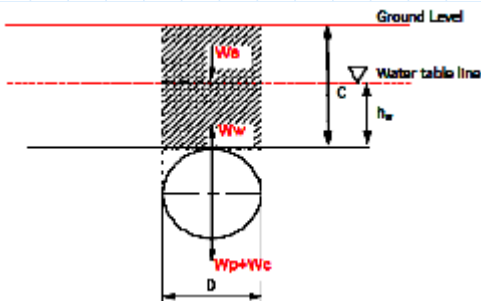
$$T_a := 23.3 \text{ }^\circ\text{C}$$

Mean Ground Temperature

$$T_g := 26 \text{ }^\circ\text{C}$$

Longitudinal Stress due to Other Axial Loading

$$S_x := 0 \text{ Pa}$$



Height of Backfill above The Top of Pipeline

$$C := 1.2 \text{ m}$$

Height of Water above The Top of Pipeline

$$h_w := C$$

Consider Effective Soil Weight (SW)

$$SW := \text{"No"}$$

(Yes or No)

Soil Parameters

Unit Weight of Wet Soil

$$\gamma_{wet} := 0 \frac{\text{kN}}{\text{m}^3}$$

Moisture Content of Wet Soil

$$w := 0\%$$

Screw Anchor Parameters

Minimum Hold on Capacity (ultimate)

$$Q_a := 0.2 \text{ kN}$$

Span Length of Screw Anchor

$$L_s := 35 \text{ m}$$

Minimum Angle Subtended by arc of Contact
between Pipe and Saddle (Degree)

$$\beta := 90$$

Empirical Installation torque coefficient

$$K_T := 10 \cdot \text{ft}^{-1}$$

Factor of Safety

Requirement for Negative Buoyancy Force

$$W_R := 0 \frac{\text{kg}}{\text{m}}$$

(0 if assigned the SF_b)

Safety Factor for Buoyancy Force

$$SF_b := 1.2$$

(0 if assigned the W_R)

B. Calculation

B-1 Parameter Calculation

Internal Pressure

$$P_i := \begin{cases} \text{if } Condition = \text{"Hydrostatic Test"} \\ \quad P_h \\ \text{else} \\ \quad P_d \end{cases}$$

Temperature Changed

$$\Delta T := \begin{cases} \text{if } Condition = \text{"Hydrostatic Test"} \\ \quad T_g - T_a \\ \text{else} \\ \quad T_d - T_a \end{cases}$$

Fluid Displacement Density

$$\rho_b := \begin{cases} \text{if } \rho = \text{"Water"} \\ \quad \rho_w \\ \text{else} \\ \quad \rho_m \end{cases}$$

Corroded Pipe Wall Thickness

$$WT := \begin{cases} \text{if } Condition = \text{"Operation End"} \\ \quad WT - CA \\ \text{else} \\ \quad WT \end{cases}$$

Internal Corrosion Coating Thickness

$$t_{in} := \begin{cases} \text{if } Condition = \text{"Operation End"} \\ \quad 0 \text{ mm} \\ \text{else} \\ \quad t_{inc} \end{cases}$$

Internal Corrosion Coating Inner Diameter

$$ID_{in} := OD - 2 WT - 2 t_{in}$$

Pipeline Internal Diameter

$$ID := OD - 2 WT$$

Outside Coating Diameter

$$D_{cor} := OD + 2 t_{cor}$$

Total Outside Pipe Diameter

$$D := D_{cor} + 2 t_{con}$$

Pipeline Moment of Inertia

$$I := \frac{\pi}{64} (OD^4 - ID^4)$$

Pipeline Sectional Elastic Modulus

$$Z := \frac{2 I}{OD}$$

Content Weight	$W_c := \begin{cases} \text{if } Condition = \text{“Hydrostatic Test”} \\ \frac{\rho_w \cdot \pi \cdot ID_{in}^2 \cdot g}{4} \\ \text{else} \\ \frac{\rho_{cont} \cdot \pi \cdot ID_{in}^2 \cdot g}{4} \end{cases}$
Internal Liner Weight	$W_{in} := \rho_{in} \cdot g \cdot \frac{\pi}{4} \cdot (ID^2 - ID_{in}^2)$
Pipeline Weight (Steel Weight)	$W_{st} := \rho_{st} \cdot g \cdot \frac{\pi}{4} \cdot (OD^2 - ID^2)$
External Corrosion Coating Weight	$W_{cor} := \rho_{cor} \cdot g \cdot \frac{\pi}{4} \cdot (D_{cor}^2 - OD^2)$
Concrete Coating Weight	$W_{con} := \rho_{con} \cdot g \cdot \frac{\pi}{4} \cdot (D^2 - D_{cor}^2)$
Weight of Pipe per Unit Length	$W_p := W_c + W_{in} + W_{st} + W_{cor} + W_{con}$
Unit Weight of Water	$\gamma_w := \rho_w \cdot g$
Unit Weight of Displacement Fluid	$\gamma_b := \rho_b \cdot g$
Unit Weight of dry soil	$\gamma_d := \frac{\gamma_{wet}}{1 + w}$
Effective Unit Weight	$\gamma_{eff} := \gamma_{wet} - \gamma_w$
Weight of fluid displaced by pipe per unit length	$W_b := \gamma_b \cdot \frac{\pi}{4} \cdot D^2$
Water Buoyancy Factor	$R_w := 1 - 0.33 \left(\frac{h_w}{C} \right)$
Earth Pressure Acting to Top of Pipeline	$P_v := \gamma_w \cdot h_w + R_w \cdot \gamma_d \cdot C$
Effective Weight of Soil above Pipe	$W_s := \begin{cases} \text{if } SW = \text{“Yes”} \\ (P_v - \gamma_w \cdot h_w) \cdot D \\ \text{else} \\ 0 \frac{N}{m} \end{cases}$
Net Upward Force due to Buoyancy per unit length	$F_b := (W_b + W_R \cdot g) - (W_p + W_s)$
Bending Moment	$M := \begin{cases} \text{if } Boundary = \text{“Restrained Pipe”} \\ \frac{1}{12} \cdot F_b \cdot L_s^2 \\ \text{else} \\ \frac{1}{8} \cdot F_b \cdot L_s^2 \end{cases}$

B-2 Buoyancy Safety Factor

Safety Factor

$$SF := \frac{W_p + W_s + \frac{Q_a}{L_s}}{W_b}$$

Safety Factor Checking

$$Check_{SFB} := \begin{cases} \text{if } SF > SF_b \\ \quad \parallel \\ \quad \text{"Pass"} \\ \text{else} \\ \quad \parallel \\ \quad \text{"Fail"} \end{cases}$$

B-3 Stress Calculation

Stress due to Saddle Load

$$S_S := (0.02 - 0.00012 \cdot (\beta - 90)) \cdot \frac{Q_a}{WT^2} \cdot \ln\left(\frac{OD}{2 WT}\right)$$

Hoop Stress
1: Bottom of Pipe
2: Top of Pipe

$$S_{H1} := \begin{cases} \text{if } \frac{OD}{WT} \geq 20 \\ \quad \parallel \\ \quad \frac{P_i \cdot OD}{2 WT} \\ \text{else} \\ \quad \parallel \\ \quad \frac{P_i \cdot (OD - WT)}{2 WT} \end{cases} \quad S_{H2} := \begin{cases} \text{if } \frac{OD}{WT} \geq 20 \\ \quad \parallel \\ \quad \frac{P_i \cdot OD}{2 WT} - S_S \\ \text{else} \\ \quad \parallel \\ \quad \frac{P_i \cdot (OD - WT)}{2 WT} - S_S \end{cases}$$

Longitudinal Stress

Longitudinal Stress due to Internal Pressure

$$S_{p1} := \begin{cases} \text{if } Boundary = \text{"Restrained Pipe"} \\ \quad \parallel \\ \quad 0.3 \cdot S_{H1} \\ \text{else} \\ \quad \parallel \\ \quad 0.5 \cdot S_{H1} \end{cases} \quad S_{p2} := \begin{cases} \text{if } Boundary = \text{"Restrained Pipe"} \\ \quad \parallel \\ \quad 0.3 \cdot S_{H2} \\ \text{else} \\ \quad \parallel \\ \quad 0.5 \cdot S_{H2} \end{cases}$$

Longitudinal Stress due to Thermal Expansion

$$S_T := \begin{cases} \text{if } Boundary = \text{"Restrained Pipe"} \\ \quad \parallel \\ \quad -E \cdot \alpha \cdot \Delta T \\ \text{else} \\ \quad \parallel \\ \quad 0 \text{ MPa} \end{cases}$$

Longitudinal Stress due to Bending Moment

$$S_B := \frac{M}{Z}$$

Net Longitudinal Stress in Pipeline

$$S_{L1} := S_{p1} + S_T + S_x + (S_B)$$

$$S_{L2} := S_{p2} + S_T + S_x - (S_B + S_S)$$

Maximum Longitudinal Stress

$$S_{Lmax} := \max(|S_{L1}|, |S_{L2}|)$$

Allowable Longitudinal Stress

$$S_{Lallow} := \begin{cases} \text{if } Boundary = \text{"Restrained Pipe"} \\ \quad \parallel \\ \quad 0.9 \cdot S \\ \text{else} \\ \quad \parallel \\ \quad 0.75 \cdot S \end{cases}$$

Longitudinal Stress Checking

$$Check_L := \begin{cases} \text{if } S_{Lmax} \leq S_{Lallow} \\ \quad \parallel \\ \quad \parallel \text{ "Pass" } \\ \quad \parallel \\ \text{else} \\ \quad \parallel \\ \quad \parallel \text{ "Fail" } \end{cases}$$

Combined Stress

Combined Stress for Restrained Pipeline $S_{com1} := |S_{L1} - S_{H1}|$

$$S_{com2} := |S_{L2} - S_{H2}|$$

Maximum Combined Stress $S_{com_max} := \max(|S_{com1}|, |S_{com2}|)$

Allowable Combined Stress $S_{com_allow} := 0.9 \cdot S$

Combined Stress Checking

$$Check_{com} := \begin{cases} \text{if } Boundary = \text{ "Unrestrained Pipe" } \\ \quad \parallel \\ \quad \parallel \text{ "Not Required" } \\ \quad \parallel \\ \text{else if } Boundary = \text{ "Restrained Pipe" } \wedge S_{com_max} \leq S_{com_allow} \\ \quad \parallel \\ \quad \parallel \text{ "Pass" } \\ \quad \parallel \\ \text{else} \\ \quad \parallel \\ \quad \parallel \text{ "Fail" } \end{cases}$$

Deflection

Maximum Deflection in Pipeline

$$\delta_{ac} := \begin{cases} \text{if } Boundary = \text{ "Restrained Pipe" } \\ \quad \parallel \\ \quad \parallel \frac{F_b \cdot L_s^4}{384 \cdot E \cdot I} \\ \quad \parallel \\ \text{else} \\ \quad \parallel \\ \quad \parallel \frac{F_b \cdot L_s^4}{185 \cdot E \cdot I} \end{cases}$$

Deflection Checking

$$Check_{de} := \begin{cases} \text{if } \delta_{ac} \leq \delta_{max} \\ \quad \parallel \\ \quad \parallel \text{ "Pass" } \\ \quad \parallel \\ \text{else} \\ \quad \parallel \\ \quad \parallel \text{ "Fail" } \end{cases}$$

Force

Anchor Force

$$F_1 := \begin{cases} \text{if } Boundary = \text{ "Restrained Pipe" } \\ \quad \parallel \\ \quad \parallel F_b \cdot L_s \\ \quad \parallel \\ \text{else} \\ \quad \parallel \\ \quad \parallel 2 \cdot \frac{5 \cdot F_b \cdot L_s}{8} \end{cases}$$

Anchor Force Checking

$$Check_{af} := \begin{cases} \text{if } F_1 \leq Q_a \\ \quad \parallel \\ \quad \parallel \text{ "Pass" } \\ \quad \parallel \\ \text{else} \\ \quad \parallel \\ \quad \parallel \text{ "Fail" } \end{cases}$$

Installation Torque

$$T_{min} := \frac{Q_a}{2 \cdot K_T}$$

C. Summary of Results

C-1 Safety Factor for Buoyancy Control Checking

Safety Factor for Buoyancy Control

$$SF = 1.207$$

Safety Factor for Buoyancy Control Checking

$$Check_{SF} = \text{"Pass"}$$

$$(SF > 1.2)$$

C-2 Net Longitudinal Stress Checking

Actual Longitudinal Stress

$$S_{L1} = -14.518 \text{ MPa}$$

$$S_{L2} = 145.346 \text{ MPa}$$

Maximum Longitudinal Stress

$$S_{Lmax} = 145.346 \text{ MPa}$$

Allowable Longitudinal Stress

$$S_{Lallow} = 337.5 \text{ MPa}$$

Longitudinal Stress Checking

$$Check_L = \text{"Pass"}$$

C-3 Combined Stress Checking

Actual Combined Stress

$$S_{com1} = 146.559 \text{ MPa}$$

$$S_{com2} = 14.113 \text{ MPa}$$

Maximum Combined Stress

$$S_{com_max} = 146.559 \text{ MPa}$$

Allowable Combined Stress

$$S_{com_allow} = 405 \text{ MPa}$$

Longitudinal Combined Checking

$$Check_{com} = \text{"Not Required"}$$

C-4 Deflection Checking

Maximum Deflection

$$\delta_{ac} = -188.158 \text{ mm}$$

Allowable Deflection

$$\delta_{max} = 200 \text{ mm}$$

Deflection Checking

$$Check_{de} = \text{"Pass"}$$

C-5 Anchor Force Checking

Upward Force due to Buoyancy per unit length

$$F_b = -0.076 \frac{\text{kN}}{\text{m}}$$

Maximum Anchor Force

$$F_1 = -3.315 \text{ kN}$$

Allowable Anchor Force

$$Q_a = 0.2 \text{ kN}$$

Net Downward Force

$$W_p + W_s + \frac{Q_a}{L_s} = 0.475 \frac{\text{kN}}{\text{m}}$$

Net Upward Force

$$W_b = 0.394 \frac{kN}{m}$$

Screw Installation Torque

$$T_{min} = 0.003 \text{ kN} \cdot \text{m}$$

Anchor Force Checking

$$Check_{af} = \text{"Pass"}$$

APPENDIX D: BUOYANCY CONTROL CALCULATION (CONTINUOUS CONCRETE WEIGHT COATING)



Technip Energies
Pipeline Engineering Department

Buoyancy Control Calculation

**PROJECT : Basic Engineering Study for Aung Sinkha Development
Project Phase 1A**

PIPELINE NAME: APL02

Installation: Concrete Weight Coating

MAIN FEATURES

This spreadsheet performs the pipeline buoyancy control calculation for an onshore burial pipeline system. The following reference is used in this calculation sheet.

/1/ American Lifelines Alliance and American Society of Civil (ASCE), Guidelines for the Design of Buried Steel Pipe, July 2001.

REFERENCE DOCUMENTATION

This spreadsheet was originally developed for application to specific project. It has been further enhanced and consolidated. A dedicated manual has been issued and should be read in conjunction with the use of this MATHCAD sheet.

REVISION HISTORY

Date	Rev.	Status	Comment	Author
18/2/2013	0	For Implementation	The spreadsheet was updated and validation by Jakkrit K.	JKK
8/4/2021	1	For Implementation	The spreadsheet was converted to MathCAD Prime by Wut T.	WUT

A. Input Data

Pipeline Parameters

Condition Type

$HT :=$ "Hydrostatic Test"
 $OB :=$ "Operation Beginning"
 $OE :=$ "Operation End"

Condition Selection

$Condition := OB$

Pipe Outside Diameter

$OD := 8.625 \text{ in}$

Pipe Wall Thickness

$WT := 7.04 \text{ mm}$

Internal Corrosion Allowance

$CA := 3 \text{ mm}$

Steel Density

$\rho_{st} := 7850 \frac{\text{kg}}{\text{m}^3}$

Fluid Content Density (Operation case)

$\rho_{cont} := 0 \frac{\text{kg}}{\text{m}^3}$

Coating Parameters

External Corrosion Coating Density

$\rho_{cor} := 950 \frac{\text{kg}}{\text{m}^3}$

External Corrosion Coating Thickness

$t_{cor} := 3.5 \text{ mm}$

Internal Corrosion Coating Density

$\rho_{in} := 0 \frac{\text{kg}}{\text{m}^3}$

Internal Corrosion Coating Thickness

$t_{inc} := 0 \text{ mm}$

Concrete Coating Density

$\rho_{con} := 3040 \frac{\text{kg}}{\text{m}^3}$

Concrete Coating Thickness

$t_{con} := 40 \text{ mm}$

Environment Parameters

Water Density

$\rho_w := 1000 \frac{\text{kg}}{\text{m}^3}$

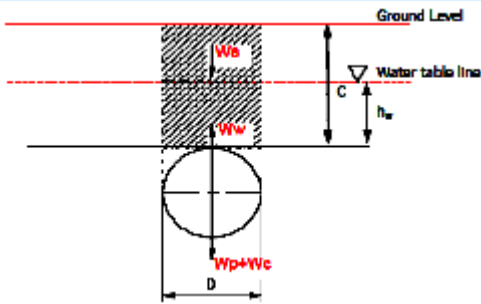
Mud Density

$\rho_m := 1400 \frac{\text{kg}}{\text{m}^3}$

$W :=$ "Water"
 $M :=$ "Mud"

Determined Buoyancy Force from

$$\rho := W$$



Height of Backfill above The Top of Pipeline

$$C := 1.2 \text{ m}$$

Height of Water above The Top of Pipeline

$$h_w := C$$

Consider Effective Soil Weight (SW)

$$SW := \text{"No"}$$

(Yes or No)

Soil Parameters

Unit Weight of Wet Soil

$$\gamma_{wet} := 0 \frac{\text{kN}}{\text{m}^3}$$

Moisture Content of Wet Soil

$$w := 0\%$$

Factor of Safety

Requirement for Negative Buoyancy Force

$$W_R := 0 \frac{\text{kg}}{\text{m}}$$

(0 if assigned the SF_b)

Safety Factor for Buoyancy Force

$$SF_b := 1.2$$

(0 if assigned the W_R)

B. Calculation

B-1 Parameter Calculation

Fluid Displacement Density

$$\rho_b := \begin{cases} \text{if } \rho = \text{"Water"} \\ \rho_w \\ \text{else} \\ \rho_m \end{cases}$$

Corroded Pipe Wall Thickness

$$WT := \begin{cases} \text{if } Condition = \text{"Operation End"} \\ WT - CA \\ \text{else} \\ WT \end{cases}$$

Internal Corrosion Coating Thickness

$$t_{in} := \begin{cases} \text{if } Condition = \text{"Operation End"} \\ 0 \text{ mm} \\ \text{else} \\ t_{inc} \end{cases}$$

Internal Corrosion Coating Inner Diameter

$$ID_{in} := OD - 2 WT - 2 t_{in}$$

Pipeline Internal Diameter

$$ID := OD - 2 WT$$

Outside Coating Diameter

$$D_{cor} := OD + 2 t_{cor}$$

Total Outside Pipe Diameter

$$D := D_{cor} + 2 t_{con}$$

Pipeline Moment of Inertia

$$I := \frac{\pi}{64} (OD^4 - ID^4)$$

Pipeline Sectional Elastic Modulus

$$Z := \frac{2 I}{OD}$$

Content Weight

$$W_c := \begin{cases} \text{if } Condition = \text{"Hydrostatic Test"} \\ \frac{\rho_w \cdot \pi \cdot ID_{in}^2 \cdot g}{4} \\ \text{else} \\ \frac{\rho_{cont} \cdot \pi \cdot ID_{in}^2 \cdot g}{4} \end{cases}$$

Internal Liner Weight

$$W_{in} := \rho_{in} \cdot g \cdot \frac{\pi}{4} \cdot (ID^2 - ID_{in}^2)$$

Pipeline Weight (Steel Weight)

$$W_{st} := \rho_{st} \cdot g \cdot \frac{\pi}{4} \cdot (OD^2 - ID^2)$$

External Corrosion Coating Weight

$$W_{cor} := \rho_{cor} \cdot g \cdot \frac{\pi}{4} \cdot (D_{cor}^2 - OD^2)$$

Concrete Coating Weight	$W_{con} := \rho_{con} \cdot g \cdot \frac{\pi}{4} \cdot (D^2 - D_{cor}^2)$
Weight of Pipe per Unit Length	$W_p := W_c + W_{in} + W_{st} + W_{cor} + W_{con}$
Unit Weight of Water	$\gamma_w := \rho_w \cdot g$
Unit Weight of Displacement Fluid	$\gamma_b := \rho_b \cdot g$
Unit Weight of dry soil	$\gamma_d := \frac{\gamma_{wet}}{1 + w}$
Effective Unit Weight	$\gamma_{eff} := \gamma_{wet} - \gamma_w$
Weight of fluid displaced by pipe per unit length	$W_b := \gamma_b \cdot \frac{\pi}{4} \cdot D^2$
Water Buoyancy Factor	$R_w := 1 - 0.33 \left(\frac{h_w}{C} \right)$
Earth Pressure Acting to Top of Pipeline	$P_v := \gamma_w \cdot h_w + R_w \cdot \gamma_d \cdot C$
Effective Weight of Soil above Pipe	$W_s := \begin{cases} \text{if } SW = \text{"Yes"} \\ \left(P_v - \gamma_w \cdot h_w \right) \cdot D \\ \text{else} \\ 0 \end{cases} \frac{N}{m}$
Net Upward Force due to Buoyancy per unit length	$F_b := (W_b + W_R \cdot g) - (W_p + W_s)$

B-2 Buoyancy Safety Factor

Safety Factor	$SF := \frac{W_p + W_s + W_a}{W_b}$
Safety Factor Checking	$Check_{SFB} := \begin{cases} \text{if } SF > SF_b \\ \text{"Pass"} \\ \text{else} \\ \text{"Fail"} \end{cases}$

C. Summary of Results

C-1 Safety Factor for Buoyancy Control Checking

Safety Factor for Buoyancy Control	$SF = 1.914$
Safety Factor for Buoyancy Control Checking	$Check_{SFB} = \text{"Pass"}$ (SF > 1.2)
Net Downward Force	$W_p + W_s + W_a = 1.381 \frac{kN}{m}$

Net Upward Force

$$W_b = 0.722 \frac{kN}{m}$$

The minimum required additional submerged weight

$$W_a = (1 \cdot 10^{-4}) \frac{kN}{m}$$

The minimum required additional weight

$$W_{a_air} = (2.445 \cdot 10^{-4}) \frac{kN}{m}$$



Technip Energies
Pipeline Engineering Department

Buoyancy Control Calculation

**PROJECT : Basic Engineering Study for Aung Sinkha Development
Project Phase 1A**

PIPELINE NAME: APL02

Operation: Concrete Weight Coating

MAIN FEATURES

This spreadsheet performs the pipeline buoyancy control calculation for an onshore burial pipeline system. The following reference is used in this calculation sheet.

/1/ American Lifelines Alliance and American Society of Civil (ASCE), Guidelines for the Design of Buried Steel Pipe, July 2001.

REFERENCE DOCUMENTATION

This spreadsheet was originally developed for application to specific project. It has been further enhanced and consolidated. A dedicated manual has been issued and should be read in conjunction with the use of this MATHCAD sheet.

REVISION HISTORY

Date	Rev.	Status	Comment	Author
18/2/2013	0	For Implementation	The spreadsheet was updated and validation by Jakkrit K.	JKK
8/4/2021	1	For Implementation	The spreadsheet was converted to MathCAD Prime by Wut T.	WUT

A. Input Data

Pipeline Parameters

Condition Type

$HT :=$ "Hydrostatic Test"
 $OB :=$ "Operation Beginning"
 $OE :=$ "Operation End"

Condition Selection

$Condition := OE$

Pipe Outside Diameter

$OD := 8.625 \text{ in}$

Pipe Wall Thickness

$WT := 7.04 \text{ mm}$

Internal Corrosion Allowance

$CA := 3 \text{ mm}$

Steel Density

$\rho_{st} := 7850 \frac{\text{kg}}{\text{m}^3}$

Fluid Content Density (Operation case)

$\rho_{cont} := 689.8 \frac{\text{kg}}{\text{m}^3}$

Coating Parameters

External Corrosion Coating Density

$\rho_{cor} := 950 \frac{\text{kg}}{\text{m}^3}$

External Corrosion Coating Thickness

$t_{cor} := 3.5 \text{ mm}$

Internal Corrosion Coating Density

$\rho_{in} := 0 \frac{\text{kg}}{\text{m}^3}$

Internal Corrosion Coating Thickness

$t_{inc} := 0 \text{ mm}$

Concrete Coating Density

$\rho_{con} := 3161 \frac{\text{kg}}{\text{m}^3}$

Concrete Coating Thickness

$t_{con} := 40 \text{ mm}$

Environment Parameters

Water Density

$\rho_w := 1000 \frac{\text{kg}}{\text{m}^3}$

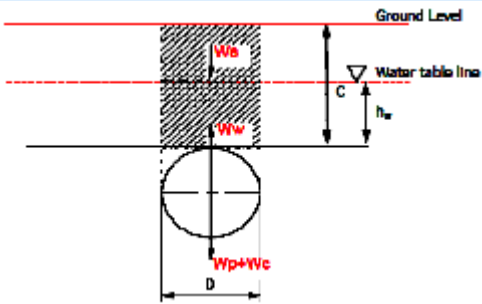
Mud Density

$\rho_m := 1400 \frac{\text{kg}}{\text{m}^3}$

$W :=$ "Water"
 $M :=$ "Mud"

Determined Buoyancy Force from

$$\rho := W$$



Height of Backfill above The Top of Pipeline

$$C := 1.2 \text{ m}$$

Height of Water above The Top of Pipeline

$$h_w := C$$

Consider Effective Soil Weight (SW)

$$SW := \text{"No"}$$

(Yes or No)

Soil Parameters

Unit Weight of Wet Soil

$$\gamma_{wet} := 0 \frac{\text{kN}}{\text{m}^3}$$

Moisture Content of Wet Soil

$$w := 0\%$$

Factor of Safety

Requirement for Negative Buoyancy Force

$$W_R := 0 \frac{\text{kg}}{\text{m}}$$

(0 if assigned the SF_b)

Safety Factor for Buoyancy Force

$$SF_b := 1.2$$

(0 if assigned the W_R)

B. Calculation

B-1 Parameter Calculation

Fluid Displacement Density

$$\rho_b := \begin{cases} \text{if } \rho = \text{"Water"} \\ \rho_w \\ \text{else} \\ \rho_m \end{cases}$$

Corroded Pipe Wall Thickness

$$WT := \begin{cases} \text{if } Condition = \text{"Operation End"} \\ WT - CA \\ \text{else} \\ WT \end{cases}$$

Internal Corrosion Coating Thickness

$$t_{in} := \begin{cases} \text{if } Condition = \text{"Operation End"} \\ 0 \text{ mm} \\ \text{else} \\ t_{inc} \end{cases}$$

Internal Corrosion Coating Inner Diameter

$$ID_{in} := OD - 2 WT - 2 t_{in}$$

Pipeline Internal Diameter

$$ID := OD - 2 WT$$

Outside Coating Diameter

$$D_{cor} := OD + 2 t_{cor}$$

Total Outside Pipe Diameter

$$D := D_{cor} + 2 t_{con}$$

Pipeline Moment of Inertia

$$I := \frac{\pi}{64} (OD^4 - ID^4)$$

Pipeline Sectional Elastic Modulus

$$Z := \frac{2 I}{OD}$$

Content Weight

$$W_c := \begin{cases} \text{if } Condition = \text{"Hydrostatic Test"} \\ \frac{\rho_w \cdot \pi \cdot ID_{in}^2 \cdot g}{4} \\ \text{else} \\ \frac{\rho_{cont} \cdot \pi \cdot ID_{in}^2 \cdot g}{4} \end{cases}$$

Internal Liner Weight

$$W_{in} := \rho_{in} \cdot g \cdot \frac{\pi}{4} \cdot (ID^2 - ID_{in}^2)$$

Pipeline Weight (Steel Weight)

$$W_{st} := \rho_{st} \cdot g \cdot \frac{\pi}{4} \cdot (OD^2 - ID^2)$$

External Corrosion Coating Weight

$$W_{cor} := \rho_{cor} \cdot g \cdot \frac{\pi}{4} \cdot (D_{cor}^2 - OD^2)$$

Concrete Coating Weight

$$W_{con} := \rho_{con} \cdot g \cdot \frac{\pi}{4} \cdot (D^2 - D_{cor}^2)$$

Weight of Pipe per Unit Length

$$W_p := W_c + W_{in} + W_{st} + W_{cor} + W_{con}$$

Unit Weight of Water

$$\gamma_w := \rho_w \cdot g$$

Unit Weight of Displacement Fluid

$$\gamma_b := \rho_b \cdot g$$

Unit Weight of dry soil

$$\gamma_d := \frac{\gamma_{wet}}{1 + w}$$

Effective Unit Weight

$$\gamma_{eff} := \gamma_{wet} - \gamma_w$$

Weight of fluid displaced by pipe per unit length

$$W_b := \gamma_b \cdot \frac{\pi}{4} \cdot D^2$$

Water Buoyancy Factor

$$R_w := 1 - 0.33 \left(\frac{h_w}{C} \right)$$

Earth Pressure Acting to Top of Pipeline

$$P_v := \gamma_w \cdot h_w + R_w \cdot \gamma_d \cdot C$$

Effective Weight of Soil above Pipe

$$W_s := \begin{cases} \text{if } SW = \text{“Yes”} & \dots \\ \left\| \left\| (P_v - \gamma_w \cdot h_w) \cdot D \right. \right. & \dots \\ \text{else} & \dots \\ \left\| \left\| 0 \right. \right. & \dots \\ \left\| \left\| \frac{N}{m} \right. \right. & \dots \end{cases}$$

Net Upward Force due to Buoyancy per unit length

$$F_b := (W_b + W_R \cdot g) - (W_p + W_s)$$

B-2 Buoyancy Safety Factor

Safety Factor

$$SF := \frac{W_p + W_s + W_a}{W_b}$$

Safety Factor Checking

$$Check_{SFB} := \begin{cases} \text{if } SF > SF_b & \dots \\ \left\| \left\| \text{“Pass”} \right. \right. & \dots \\ \text{else} & \dots \\ \left\| \left\| \text{“Fail”} \right. \right. & \dots \end{cases}$$

C. Summary of Results

C-1 Safety Factor for Buoyancy Control Checking

Safety Factor for Buoyancy Control

$$SF = 2.087$$

Safety Factor for Buoyancy Control Checking

$$Check_{SFB} = \text{“Pass”}$$

(SF > 1.2)

Net Downward Force

$$W_p + W_s + W_a = 1.506 \frac{kN}{m}$$

Net Upward Force

$$W_b = 0.722 \frac{kN}{m}$$

The minimum required additional submerged weight

$$W_a = (1 \cdot 10^{-4}) \frac{kN}{m}$$

The minimum required additional weight

$$W_{a_air} = (2.445 \cdot 10^{-4}) \frac{kN}{m}$$

APPENDIX E: BUOYANCY CONTROL CALCULATION (CONTINUOUS SAND BAG WEIGHT)



Technip Energies
Pipeline Engineering Department

Buoyancy Control Calculation

**PROJECT : Basic Engineering Study for Aung Sinkha Development
Project Phase 1A**

PIPELINE NAME: APL02

Installation: Sand Bag Weight

MAIN FEATURES

This spreadsheet performs the pipeline buoyancy control calculation for an onshore burial pipeline system. The following reference is used in this calculation sheet.

/1/ American Lifelines Alliance and American Society of Civil (ASCE), Guidelines for the Design of Buried Steel Pipe, July 2001.

REFERENCE DOCUMENTATION

This spreadsheet was originally developed for application to specific project. It has been further enhanced and consolidated. A dedicated manual has been issued and should be read in conjunction with the use of this MATHCAD sheet.

REVISION HISTORY

Date	Rev.	Status	Comment	Author
18/2/2013	0	For Implementation	The spreadsheet was updated and validation by Jakkrit K.	JKK
8/4/2021	1	For Implementation	The spreadsheet was converted to MathCAD Prime by Wut T.	WUT

A. Input Data

Pipeline Parameters

Condition Type
 $HT :=$ "Hydrostatic Test"
 $OB :=$ "Operation Beginning"
 $OE :=$ "Operation End"

Condition Selection
 $Condition := OB$

Pipe Outside Diameter
 $OD := 8.625 \text{ in}$

Pipe Wall Thickness
 $WT := 7.04 \text{ mm}$

Internal Corrosion Allowance
 $CA := 3 \text{ mm}$

Steel Density
 $\rho_{st} := 7850 \frac{\text{kg}}{\text{m}^3}$

Fluid Content Density (Operation case)
 $\rho_{cont} := 0 \frac{\text{kg}}{\text{m}^3}$

Coating Parameters

External Corrosion Coating Density
 $\rho_{cor} := 950 \frac{\text{kg}}{\text{m}^3}$

External Corrosion Coating Thickness
 $t_{cor} := 3.5 \text{ mm}$

Internal Corrosion Coating Density
 $\rho_{in} := 0 \frac{\text{kg}}{\text{m}^3}$

Internal Corrosion Coating Thickness
 $t_{inc} := 0 \text{ mm}$

Concrete Coating Density
 $\rho_{con} := 3040 \frac{\text{kg}}{\text{m}^3}$

Concrete Coating Thickness
 $t_{con} := 0 \text{ mm}$

Environment Parameters

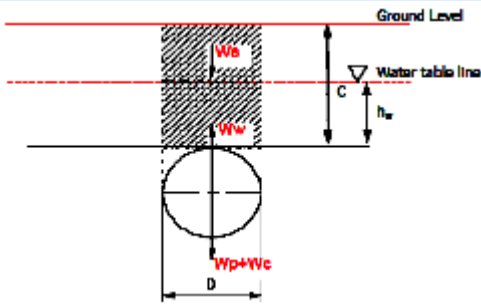
Water Density
 $\rho_w := 1000 \frac{\text{kg}}{\text{m}^3}$

Mud Density
 $\rho_m := 1400 \frac{\text{kg}}{\text{m}^3}$

$W :=$ "Water"
 $M :=$ "Mud"

Determined Buoyancy Force from

$$\rho := W$$



Height of Backfill above The Top of Pipeline

$$C := 1.2 \text{ m}$$

Height of Water above The Top of Pipeline

$$h_w := C$$

Consider Effective Soil Weight (SW)

$$SW := \text{"No"}$$

(Yes or No)

Soil Parameters

Unit Weight of Wet Soil

$$\gamma_{wet} := 0 \frac{\text{kN}}{\text{m}^3}$$

Moisture Content of Wet Soil

$$w := 0\%$$

Factor of Safety

Requirement for Negative Buoyancy Force

$$W_R := 0 \frac{\text{kg}}{\text{m}}$$

(0 if assigned the SF_b)

Safety Factor for Buoyancy Force

$$SF_b := 1.2$$

(0 if assigned the W_R)

B. Calculation

B-1 Parameter Calculation

Fluid Displacement Density

$$\rho_b := \begin{cases} \text{if } \rho = \text{"Water"} \\ \rho_w \\ \text{else} \\ \rho_m \end{cases}$$

Corroded Pipe Wall Thickness

$$WT := \begin{cases} \text{if } Condition = \text{"Operation End"} \\ WT - CA \\ \text{else} \\ WT \end{cases}$$

Internal Corrosion Coating Thickness

$$t_{in} := \begin{cases} \text{if } Condition = \text{"Operation End"} \\ 0 \text{ mm} \\ \text{else} \\ t_{inc} \end{cases}$$

Internal Corrosion Coating Inner Diameter

$$ID_{in} := OD - 2 \cdot WT - 2 \cdot t_{in}$$

Pipeline Internal Diameter

$$ID := OD - 2 \cdot WT$$

Outside Coating Diameter

$$D_{cor} := OD + 2 \cdot t_{cor}$$

Total Outside Pipe Diameter

$$D := D_{cor} + 2 \cdot t_{con}$$

Pipeline Moment of Inertia

$$I := \frac{\pi}{64} (OD^4 - ID^4)$$

Pipeline Sectional Elastic Modulus

$$Z := \frac{2 \cdot I}{OD}$$

Content Weight

$$W_c := \begin{cases} \text{if } Condition = \text{"Hydrostatic Test"} \\ \frac{\rho_w \cdot \pi \cdot ID_{in}^2 \cdot g}{4} \\ \text{else} \\ \frac{\rho_{cont} \cdot \pi \cdot ID_{in}^2 \cdot g}{4} \end{cases}$$

Internal Liner Weight

$$W_{in} := \rho_{in} \cdot g \cdot \frac{\pi}{4} \cdot (ID^2 - ID_{in}^2)$$

Pipeline Weight (Steel Weight)

$$W_{st} := \rho_{st} \cdot g \cdot \frac{\pi}{4} \cdot (OD^2 - ID^2)$$

External Corrosion Coating Weight

$$W_{cor} := \rho_{cor} \cdot g \cdot \frac{\pi}{4} \cdot (D_{cor}^2 - OD^2)$$

Concrete Coating Weight	$W_{con} := \rho_{con} \cdot g \cdot \frac{\pi}{4} \cdot (D^2 - D_{cor}^2)$
Weight of Pipe per Unit Length	$W_p := W_c + W_{in} + W_{st} + W_{cor} + W_{con}$
Unit Weight of Water	$\gamma_w := \rho_w \cdot g$
Unit Weight of Displacement Fluid	$\gamma_b := \rho_b \cdot g$
Unit Weight of dry soil	$\gamma_d := \frac{\gamma_{wet}}{1 + w}$
Effective Unit Weight	$\gamma_{eff} := \gamma_{wet} - \gamma_w$
Weight of fluid displaced by pipe per unit length	$W_b := \gamma_b \cdot \frac{\pi}{4} \cdot D^2$
Water Buoyancy Factor	$R_w := 1 - 0.33 \left(\frac{h_w}{C} \right)$
Earth Pressure Acting to Top of Pipeline	$P_v := \gamma_w \cdot h_w + R_w \cdot \gamma_d \cdot C$
Effective Weight of Soil above Pipe	$W_s := \begin{cases} \text{if } SW = \text{"Yes"} \\ \left(P_v - \gamma_w \cdot h_w \right) \cdot D \\ \text{else} \\ 0 \end{cases} \frac{N}{m}$
Net Upward Force due to Buoyancy per unit length	$F_b := (W_b + W_R \cdot g) - (W_p + W_s)$

B-2 Buoyancy Safety Factor

Safety Factor	$SF := \frac{W_p + W_s + W_a}{W_b}$
Safety Factor Checking	$Check_{SFB} := \begin{cases} \text{if } SF > SF_b \\ \text{"Pass"} \\ \text{else} \\ \text{"Fail"} \end{cases}$

C. Summary of Results

C-1 Safety Factor for Buoyancy Control Checking

Safety Factor for Buoyancy Control	$SF = 1.2$
Safety Factor for Buoyancy Control Checking	$Check_{SFB} = \text{"Pass"}$ (SF > 1.2)
Net Downward Force	$W_p + W_s + W_a = 0.472 \frac{kN}{m}$

Net Upward Force

$$W_b = 0.394 \frac{kN}{m}$$

The minimum required additional submerged weight

$$W_a = 0.089 \frac{kN}{m}$$

The minimum required additional weight

$$W_{a_air} = 0.217 \frac{kN}{m}$$



Technip Energies
Pipeline Engineering Department

Buoyancy Control Calculation

**PROJECT : Basic Engineering Study for Aung Sinkha Development
Project Phase 1A**

PIPELINE NAME: APL02

Operation: Sand Bag Weight

MAIN FEATURES

This spreadsheet performs the pipeline buoyancy control calculation for an onshore burial pipeline system. The following reference is used in this calculation sheet.

/1/ American Lifelines Alliance and American Society of Civil (ASCE), Guidelines for the Design of Buried Steel Pipe, July 2001.

REFERENCE DOCUMENTATION

This spreadsheet was originally developed for application to specific project. It has been further enhanced and consolidated. A dedicated manual has been issued and should be read in conjunction with the use of this MATHCAD sheet.

REVISION HISTORY

Date	Rev.	Status	Comment	Author
18/2/2013	0	For Implementation	The spreadsheet was updated and validation by Jakkrit K.	JKK
8/4/2021	1	For Implementation	The spreadsheet was converted to MathCAD Prime by Wut T.	WUT

A. Input Data

Pipeline Parameters

Condition Type	$HT := \text{"Hydrostatic Test"}$ $OB := \text{"Operation Beginning"}$ $OE := \text{"Operation End"}$
Condition Selection	$Condition := OE$
Pipe Outside Diameter	$OD := 8.625 \text{ in}$
Pipe Wall Thickness	$WT := 7.04 \text{ mm}$
Internal Corrosion Allowance	$CA := 3 \text{ mm}$
Steel Density	$\rho_{st} := 7850 \frac{\text{kg}}{\text{m}^3}$
Fluid Content Density (Operation case)	$\rho_{cont} := 689.8 \frac{\text{kg}}{\text{m}^3}$

Coating Parameters

External Corrosion Coating Density	$\rho_{cor} := 950 \frac{\text{kg}}{\text{m}^3}$
External Corrosion Coating Thickness	$t_{cor} := 3.5 \text{ mm}$
Internal Corrosion Coating Density	$\rho_{in} := 0 \frac{\text{kg}}{\text{m}^3}$
Internal Corrosion Coating Thickness	$t_{inc} := 0 \text{ mm}$
Concrete Coating Density	$\rho_{con} := 3040 \frac{\text{kg}}{\text{m}^3}$
Concrete Coating Thickness	$t_{con} := 0 \text{ mm}$

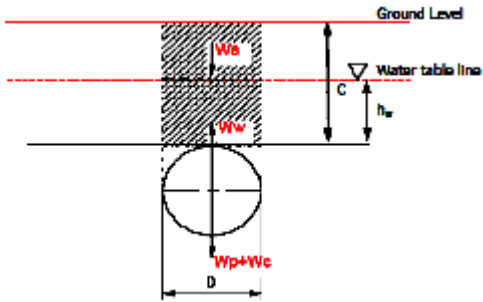
Environment Parameters

Water Density	$\rho_w := 1000 \frac{\text{kg}}{\text{m}^3}$
Mud Density	$\rho_m := 1400 \frac{\text{kg}}{\text{m}^3}$

$W := \text{"Water"}$
 $M := \text{"Mud"}$

Determined Buoyancy Force from

$$\rho := W$$



Height of Backfill above The Top of Pipeline

$$C := 1.2 \text{ m}$$

Height of Water above The Top of Pipeline

$$h_w := C$$

Consider Effective Soil Weight (SW)

$$SW := \text{"No"}$$

(Yes or No)

Soil Parameters

Unit Weight of Wet Soil

$$\gamma_{wet} := 0 \frac{\text{kN}}{\text{m}^3}$$

Moisture Content of Wet Soil

$$w := 0\%$$

Factor of Safety

Requirement for Negative Buoyancy Force

$$W_R := 0 \frac{\text{kg}}{\text{m}}$$

(0 if assigned the SF_b)

Safety Factor for Buoyancy Force

$$SF_b := 1.2$$

(0 if assigned the W_R)

B. Calculation

B-1 Parameter Calculation

Fluid Displacement Density

$$\rho_b := \begin{cases} \text{if } \rho = \text{“Water”} \\ \rho_w \\ \text{else} \\ \rho_m \end{cases}$$

Corroded Pipe Wall Thickness

$$WT := \begin{cases} \text{if } Condition = \text{“Operation End”} \\ WT - CA \\ \text{else} \\ WT \end{cases}$$

Internal Corrosion Coating Thickness

$$t_{in} := \begin{cases} \text{if } Condition = \text{“Operation End”} \\ 0 \text{ mm} \\ \text{else} \\ t_{inc} \end{cases}$$

Internal Corrosion Coating Inner Diameter

$$ID_{in} := OD - 2 WT - 2 t_{in}$$

Pipeline Internal Diameter

$$ID := OD - 2 WT$$

Outside Coating Diameter

$$D_{cor} := OD + 2 t_{cor}$$

Total Outside Pipe Diameter

$$D := D_{cor} + 2 t_{con}$$

Pipeline Moment of Inertia

$$I := \frac{\pi}{64} (OD^4 - ID^4)$$

Pipeline Sectional Elastic Modulus

$$Z := \frac{2 I}{OD}$$

Content Weight

$$W_c := \begin{cases} \text{if } Condition = \text{“Hydrostatic Test”} \\ \frac{\rho_w \cdot \pi \cdot ID_{in}^2 \cdot g}{4} \\ \text{else} \\ \frac{\rho_{cont} \cdot \pi \cdot ID_{in}^2 \cdot g}{4} \end{cases}$$

Internal Liner Weight

$$W_{in} := \rho_{in} \cdot g \cdot \frac{\pi}{4} \cdot (ID^2 - ID_{in}^2)$$

Pipeline Weight (Steel Weight)

$$W_{st} := \rho_{st} \cdot g \cdot \frac{\pi}{4} \cdot (OD^2 - ID^2)$$

External Corrosion Coating Weight

$$W_{cor} := \rho_{cor} \cdot g \cdot \frac{\pi}{4} \cdot (D_{cor}^2 - OD^2)$$

Concrete Coating Weight

$$W_{con} := \rho_{con} \cdot g \cdot \frac{\pi}{4} \cdot (D^2 - D_{cor}^2)$$

Weight of Pipe per Unit Length

$$W_p := W_c + W_{in} + W_{st} + W_{cor} + W_{con}$$

Unit Weight of Water

$$\gamma_w := \rho_w \cdot g$$

Unit Weight of Displacement Fluid

$$\gamma_b := \rho_b \cdot g$$

Unit Weight of dry soil

$$\gamma_d := \frac{\gamma_{wet}}{1 + w}$$

Effective Unit Weight

$$\gamma_{eff} := \gamma_{wet} - \gamma_w$$

Weight of fluid displaced by pipe per unit length

$$W_b := \gamma_b \cdot \frac{\pi}{4} \cdot D^2$$

Water Buoyancy Factor

$$R_w := 1 - 0.33 \left(\frac{h_w}{C} \right)$$

Earth Pressure Acting to Top of Pipeline

$$P_v := \gamma_w \cdot h_w + R_w \cdot \gamma_d \cdot C$$

Effective Weight of Soil above Pipe

$$W_s := \begin{cases} \text{if } SW = \text{“Yes”} \\ \left(P_v - \gamma_w \cdot h_w \right) \cdot D \\ \text{else} \\ 0 \end{cases} \frac{N}{m}$$

Net Upward Force due to Buoyancy per unit length

$$F_b := (W_b + W_R \cdot g) - (W_p + W_s)$$

B-2 Buoyancy Safety Factor

Safety Factor

$$SF := \frac{W_p + W_s + W_a}{W_b}$$

Safety Factor Checking

$$Check_{SFB} := \begin{cases} \text{if } SF > SF_b \\ \text{“Pass”} \\ \text{else} \\ \text{“Fail”} \end{cases}$$

C. Summary of Results

C-1 Safety Factor for Buoyancy Control Checking

Safety Factor for Buoyancy Control

$$SF = 1.2$$

Safety Factor for Buoyancy Control Checking

$$Check_{SFB} = \text{“Pass”}$$

(SF > 1.2)

Net Downward Force

$$W_p + W_s + W_a = 0.472 \frac{kN}{m}$$

Net Upward Force

$$W_b = 0.394 \frac{kN}{m}$$

The minimum required additional submerged weight

$$W_a = 0.003 \frac{kN}{m}$$

The minimum required additional weight

$$W_{a_air} = 0.007 \frac{kN}{m}$$